

DESERT GOLD

A West African Gold Exploration and Development Company

TSX-V: DAU









Disclaimer & Disclosure


All statements in this presentation, other than historical facts, that address exploration activities and mining potential are forward-looking statements. Although Desert Gold Ventures Inc. believes that the expectations expressed in such forward-looking statements are based on reasonable assumptions, such statements should not in any way be construed as guarantees of future performance. Factors that could cause developments to differ materially from those expressed include exploration results; technical analysis; and lack of availability to the company of necessary capital to progress its projects further. The company is subject to specific risks inherent in the mineral exploration business and general economic and business conditions.

The Company is solely responsible for the contents and accuracy of any scientific and technical information in this presentation. Don Dudek, P.Geo, a director of Desert Gold and a Qualified Person under National Instrument 43-101, has reviewed and approved the scientific and technical information contained in this presentation.

Please review additional disclosure details for noted production, reserves and resources, at the end of this presentation.

About Desert Gold

-  Exploring for tier 1 gold deposits in West Africa
-  440 km² flagship SMSZ Project. Land package situated along Senegal Mali Shear Zone which is related to 6 gold mines
-  297km² Tiegba gold project located in Côte d'Ivoire. Major 5km by 2km gold-in-soil anomaly yet to be drill tested poised for new discovery. 80% of the license remains unexplored representing major exploration blue sky
-  Bracketed by Tier 1 mines with production of up to ~600,000 ozs Au per year
-  SMSZ property hosts **Measured and Indicated Mineral Resources** of 11.12 million tonnes grading 0.94 g/t gold totaling 336,800 ounces and **Inferred Mineral Resources** of 27.16 million tonnes grading 1.01 g/t gold totaling 879,900 ounces
-  Target rich environment with 25+ gold zones discovered to date. Developing economic grade targets*. New discoveries.
 - Gourbassi West – 3.52 g/t gold over 33 metres, Gourbassi West North – 1.94 g/t gold over 30 metres and 1.56 g/t gold over 68.4 metres
 - Gourbassi East – 3.62 g/t gold over 42 metres
 - Barani East – 6.28 g/t gold over 13 metres
 - Soa – 2.04 g/t gold over 30 metres
 - Manankoto – 1.84 g/t gold over 30 metres
 - Linnguekoto West – 7.78 g/t Au over 19 metres (true width estimated at 4.9 metres)
 - Mogoyafara South – 2.15 g/t Au over 29 metres

** True width estimated at 60-90% of drilled length with exception of Soa which is unknown and Linnguekoto West*
-  15,000 m 2025 drill program proposed with possible updated resource estimate in 2026

Corporate Snapshot

Ticker	TSX.V: DAU
Issued & Outstanding	270.5 million
Options	12.3 million
Warrants	15.7 million
Fully Diluted	298.5 million

Exercise Price	Expiration	# of Warrants
\$0.08	November 2027	15,728,571

Major Shareholders

Management and Board	10%
Merk Investments	7%
Grand Peak Capital Corp.	5%
Leede Jones Gable	4%
Ross Beaty	3%
Sodinaf International	2%
Lucky Holdings	2%
Elemental Altus Royalties	2%

Board & Management

Sonny Janda, Chairman	Jared Scharf, Director, President & CEO
Doug Engdahl, P. Geo Director	Chris Marsh, CFA Director
Ty Magee, P. Geo Technical Advisor	Ousmane Diallo, Geo. VP, Exploration

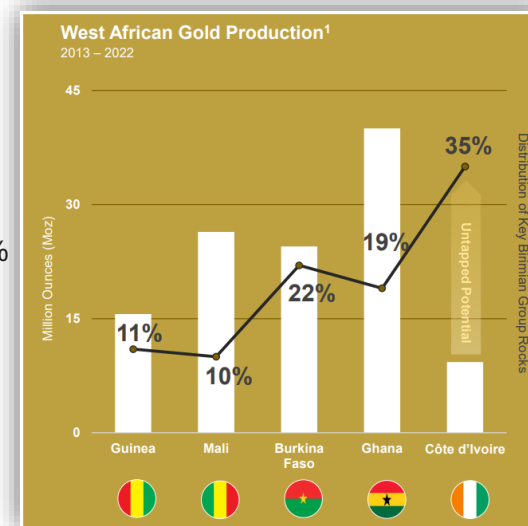
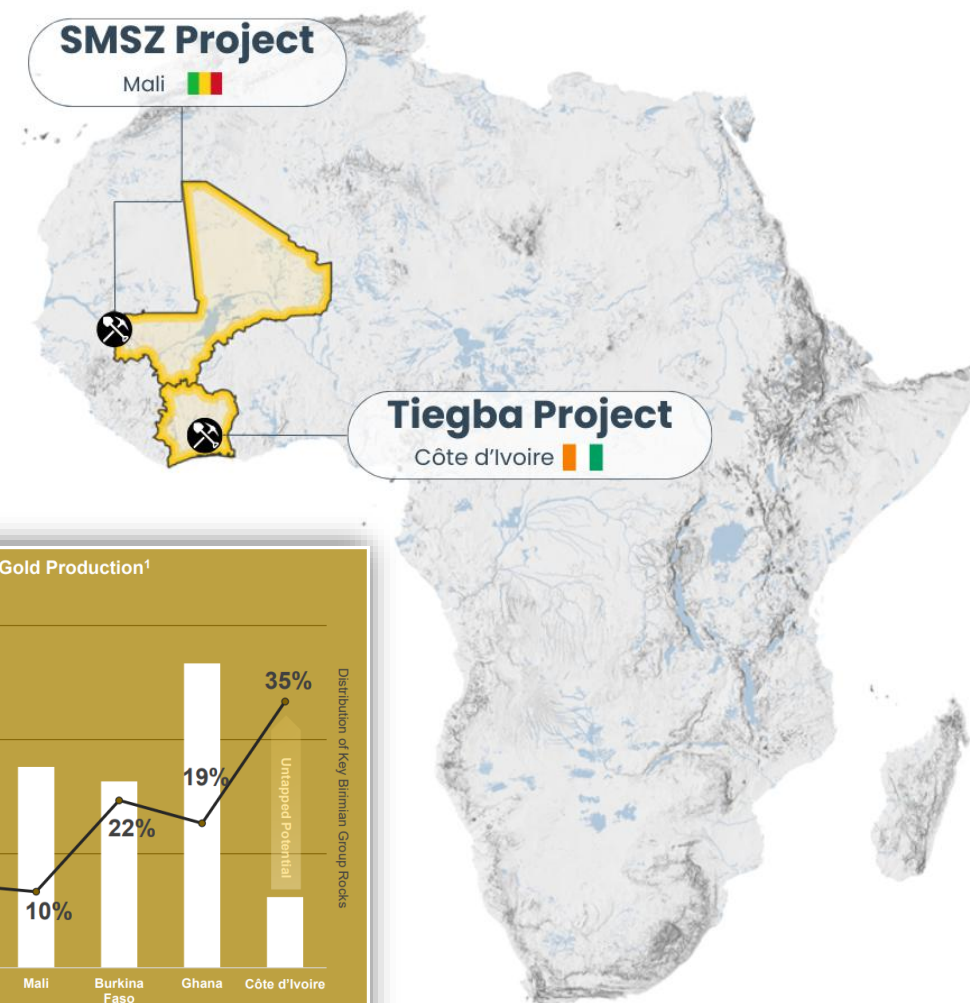
West Africa Focus – Mali & Côte d'Ivoire

Mali

- Africa's forth largest gold producer
- Annual gold production in 2024 ~2.5 million oz Au⁸
- >30 million oz Au of reserves⁹
- Recent new discoveries (Roscan, Oklo, B2's Mamba deposit)
- Highly prospective and still underexplored to not explored
- Major producers and Developers - Barrick, B2Gold, Endeavour, Allied Gold, Hummingbird, Resolute and BCM

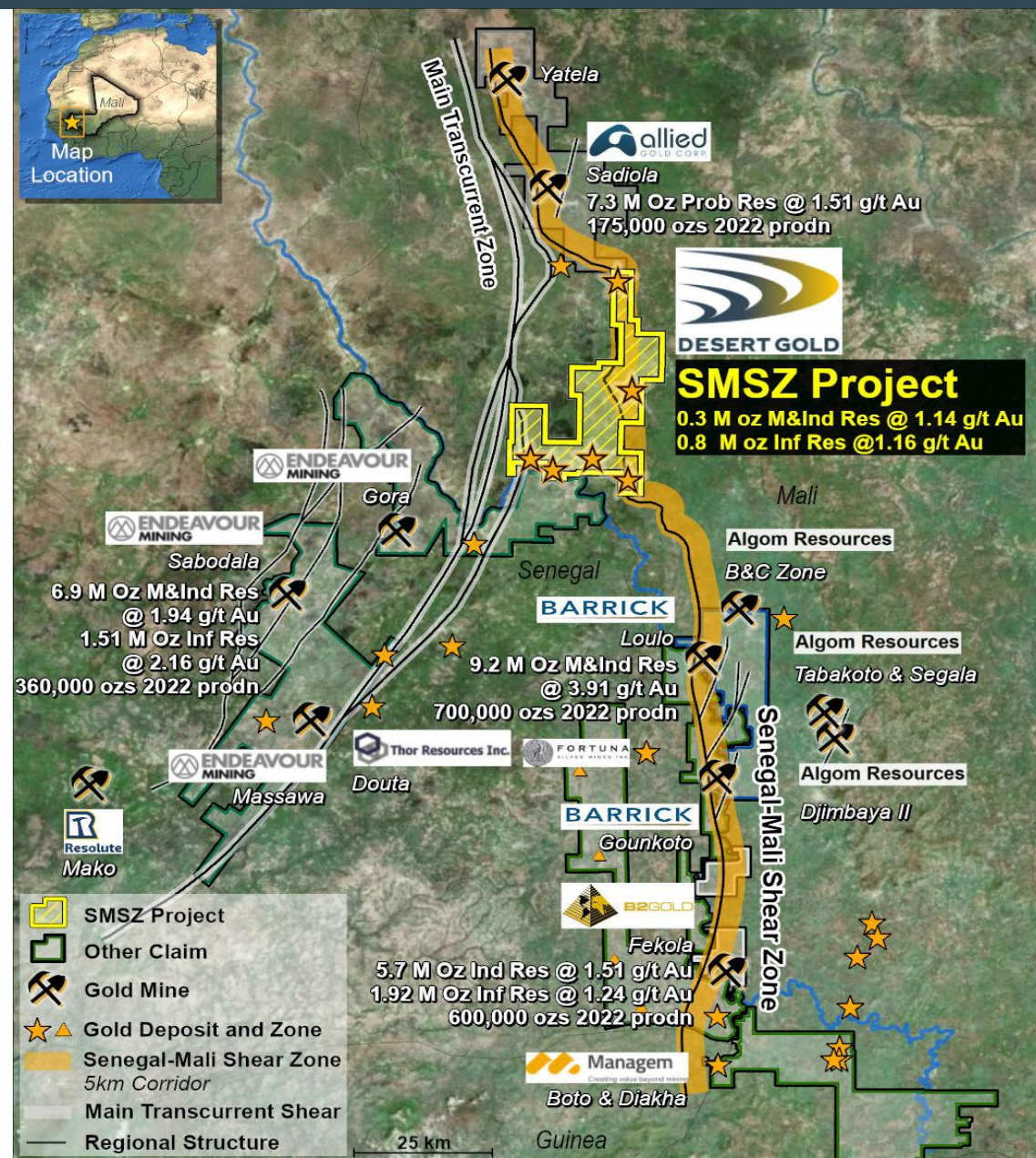
Cote d'Ivoire

- Emerging as West Africa's lead destination for gold exploration and development
- New mines coming online such at Montage's Kone gold mine
- Côte d'Ivoire contains 35% of the region's Birimian Group rocks but only 7% of regional gold production. Significantly underexplored.
- Best infrastructure in the region. Excellent road networks and power grid access
- Mining friendly tax code
- High grade gold deposits
- Rising exploration activity
- Prospective geology but low historical production



Western Gold Belt of Mali

- Gold mineralization in Western Mali is related to the **Senegal Mali Shear Zone (“SMSZ”)**
- Desert Gold’s property is directly on and proximal to the **SMSZ**
- Major deposits in close proximity to the SMSZ Project*:
 - Yatela: 2.1 Moz Au past production¹
 - Sadiola: 113.7 Mt Ind Res @ 1.86 g/t Au for 6.79 Moz Au, 4.7 Moz Au past production¹
 - Loulo and Goukoto: 6.9 Moz Au past production and Measured res of 24 Mt @ 4.09 g/t for 3.2 Moz Au of Au and Ind res of 36 Mt @ 4.69 g/t for 5.4 Moz Au²
 - Tabakoto & Segala: 0.96 Moz past production, Ind Res of 19.9 Mt @ 3.01 g/t Au for 1.9 Moz ; Inf res of 7.4 Mt @ 3.4 g/t Au for 0.8 Moz³
 - Fekola: 102.8 Mt Ind Res @ 1.5 g/t Au for 5.0 Moz and 92.8 Mt Inf Res @ 1.15 g/t Au for 3.4 Moz⁴



SMSZ Project, West Mali

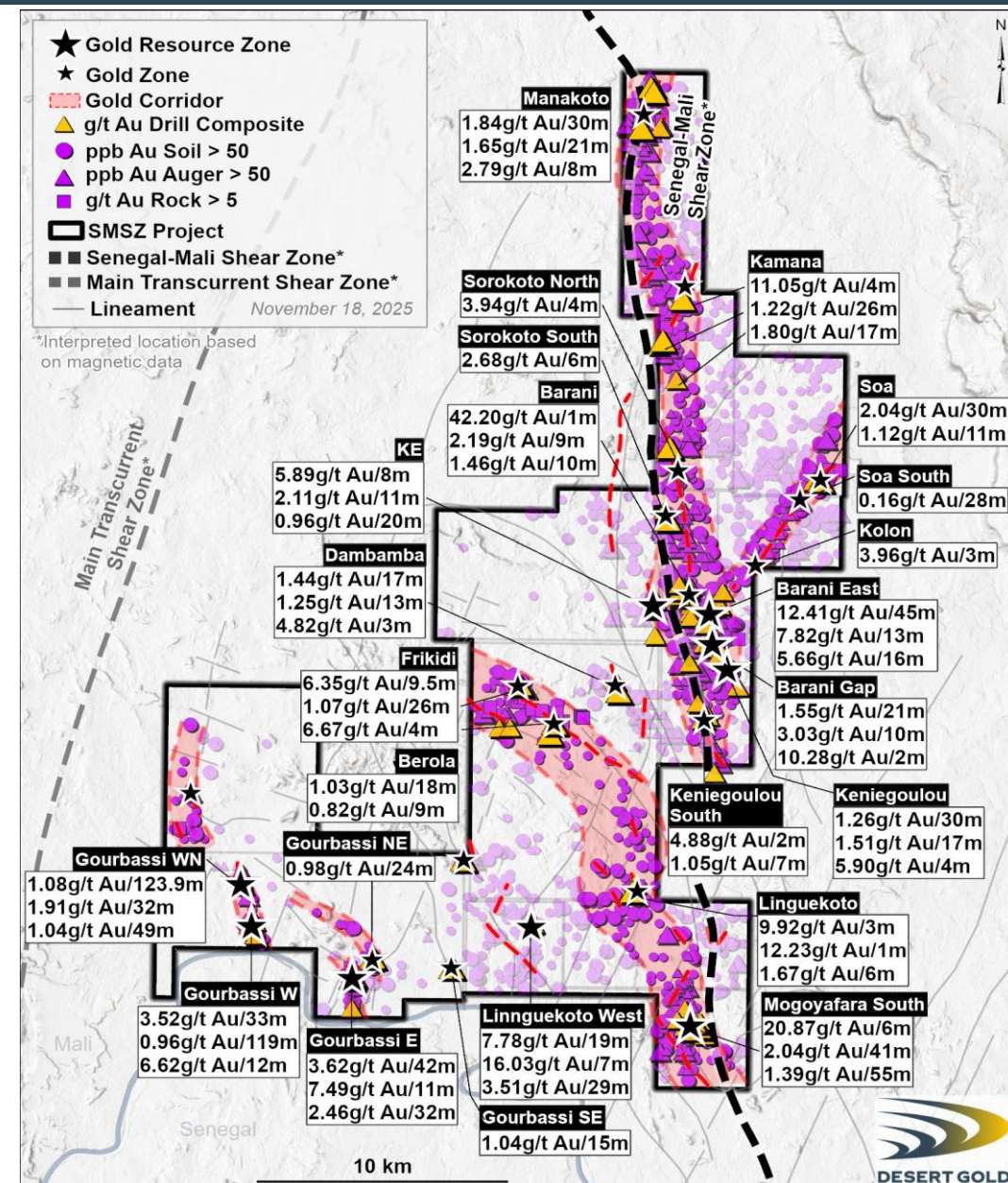
440 km² Project spans the SMSZ

- Airborne magnetic data shows the likely location of the Senegal Mali Shear Zone between high magnetic rocks to west and low magnetic rocks to east

- North-northeast trending magnetic features often represent secondary shear zones, which control the location of gold zones

Mineral Resources at 5 zones, working on 25 more zones with Resource potential

- Measured and Indicated Mineral Resources** of 11.12 million tonnes grading 0.94 g/t gold totaling 336,800 ounces and **Inferred Mineral Resources** of 27.16 million tonnes grading 1.01 g/t gold totaling 879,900 ounces
- Obvious potential to expand Resources with new discoveries and open-ended gold-bearing zones 2026 potential at Gourbassi West North, Manakoto, Kamana, Sorokoto South and Frikidi
>20 untested gold- and auger-in-soil anomalies >200 ppb



SMSZ Project, West Mali

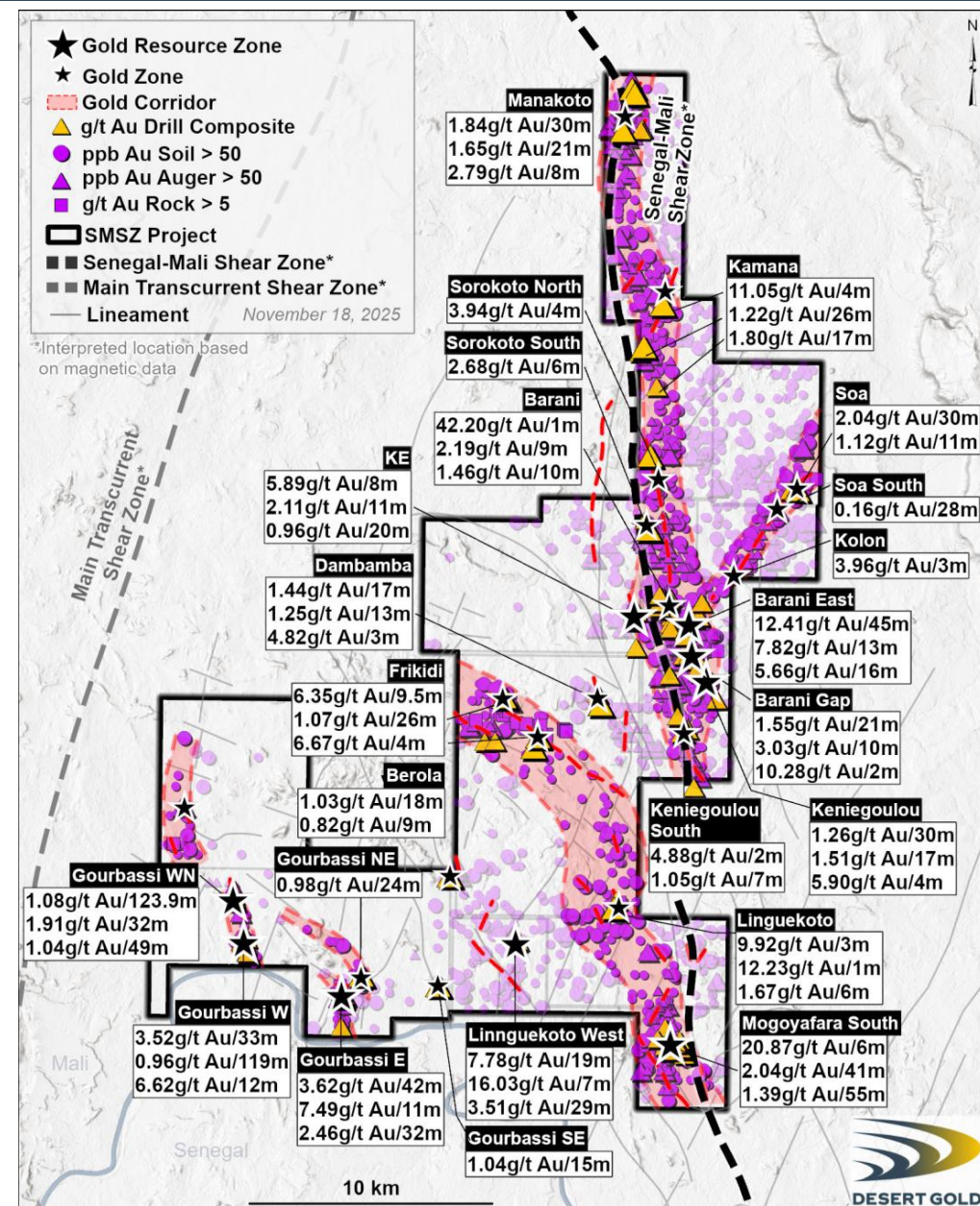
2025 Mineral Resource



Mineral Resource Category	Project	Project Sub Division	Tonnes (In Situ)	Gold Grade	Gold Content	
			Mt	g/t	kg	oz
Measured	Gourbassi	Gourbassi West	2.46	0.78	1,920	61,600
	Barani	Barani East	0.68	2.00	1,360	43,900
	Total Measured		3.14	1.05	3,280	105,500
Indicated	Gourbassi	Gourbassi East	2.72	1.06	2,880	92,600
		Gourbassi West	4.28	0.65	2,790	89,700
	Barani	Barani East	0.98	1.56	1,520	49,000
	Total Indicated		7.98	0.90	7,190	231,300
	Total M&I		11.12	0.94	10,470	336,800
Inferred	Mogoyafara	Mogoyafara South	14.33	0.97	13,920	447,500
	Linnguekoto	Linnguekoto West	1.47	1.42	2,080	67,000
	Gourbassi	Gourbassi East	2.22	1.21	2,670	86,000
		Gourbassi West	3.46	0.75	2,610	83,800
		Gourbassi West North	2.45	0.72	1,760	56,500
	Barani	Barani East	1.24	1.38	1,710	55,100
		Barani Gap	1.07	0.88	940	30,200
		Keniegoulou	0.46	2.40	1,090	35,200
		KE	0.47	1.23	580	18,600
	Total Inferred		27.16	1.01	27,370	879,900

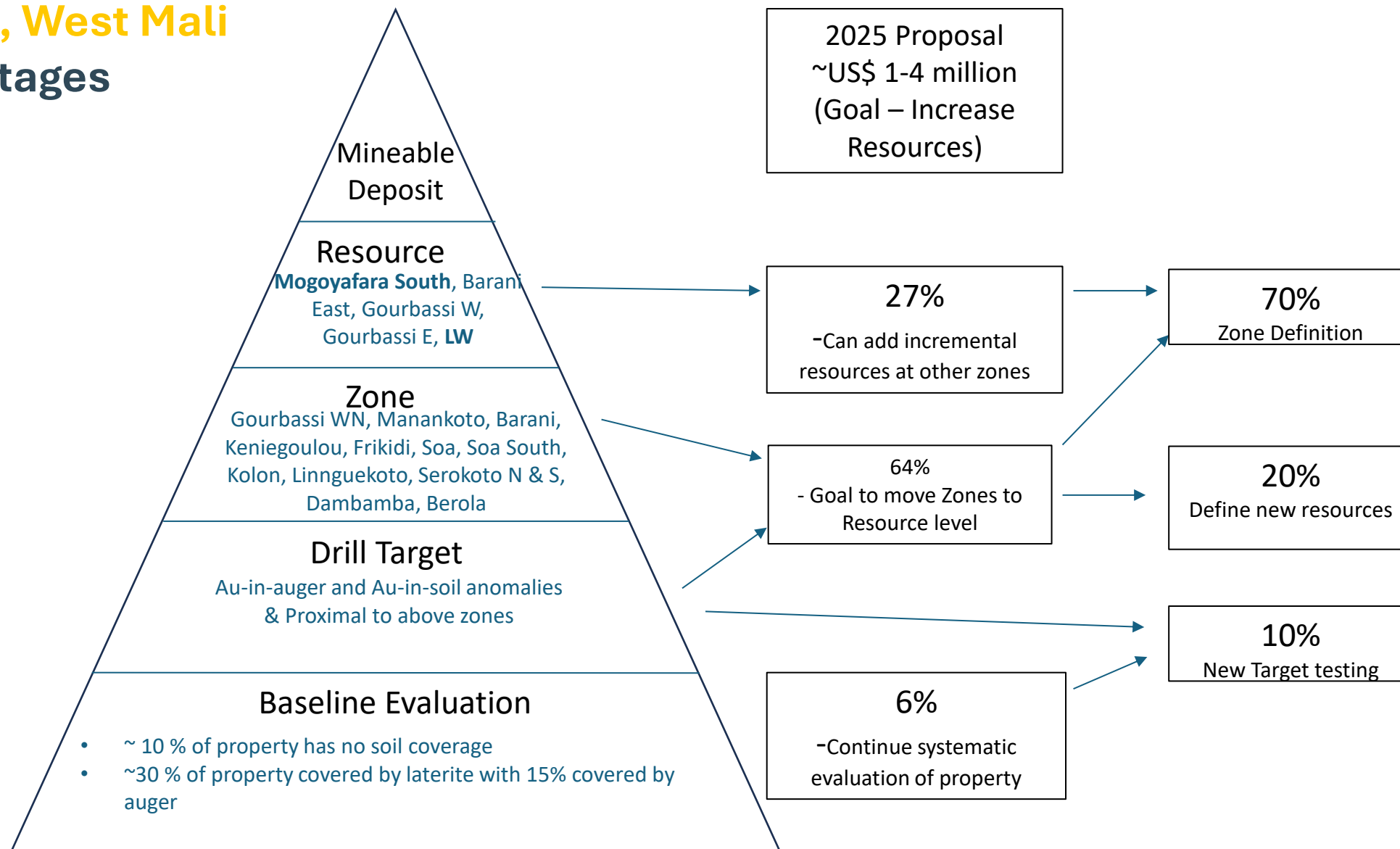
- New Gourbassi West North resource added
- Gourbassi West North resource excludes the sulphides (7.44 Mt @ 0.87 g/t = 208 koz)
- Cut-off grade applied is 0.2 g/t
- COG based on a gold price of \$2,500 / oz
- Mineral Resource only declared within the RPEEE resource pit shells
- Total Mineral Resource = 1.22 Moz

4



SMSZ Project, West Mali

Exploration Stages



Target: Greenstone shear and Intrusion-hosted deposits (vein & disseminated).

2025 Objectives & Program :

Regional data enhancement: Project-wide structural & lithological mapping (~115 km²) integrated with:

Geochemistry Expansion, with trench and auger drilling to penetrate transported cover, confirm anomaly continuity, and refine drill targets

Follow-up and first-pass testing along the highest priority structural intersections and geochem anomalies: AC broad spaced to target definition, Reverse Circulation (RC) to test mineralization rooting, dilation zones, intrusive contacts, Diamond Drilling (DD) to confirm orientation, grade continuity, and ore-shoot geometry at high ranked prospect,

Progress target one pipeline stage, with success based drilling program.

Overall objectives: Define and constrain the limits of the >50 km SMSZ-hosted mineralized system, including shear corridors, fold-hinge zones, cross-structures, and intrusive-margin targets. Validate potential for a multi-Moz discovery by integrating structural geology, soil/auger geochemistry, and drilling results across all three corridors. Prioritize targets with capacity to deliver >1 Moz Au cumulative resources through systematic step-out and follow-up drilling.

Main program components: Surface work (mapping+soil+rock+trenching), Target delineation drilling (wide spaced AC/Auger) + Drill Testing (RC + DD drilling)

1,000m Trench + 5,000m AC + 5,000m RC + 2,000m DD.

Decision Point & Date: TD drilling showing continuity of gold mineralization + alteration - DT results showing horizontal and vertical continuity of economic grade supporting potential for gold deposit – Final decision point in June 2026

Major Strengths: Crustal-scale orogenic corridor hosting multiple multi-million-ounce deposits (Loulo > 14 Moz, Gounkoto > 5 Moz, Fekola > 7 Moz, Sadiola > 7 Moz); Multi-corridor gold system Mogoyafara–Linnguekoto–Frikidi (20 km), Barani–Manakoto (27 km), and Gourbassi (8 km) collectively defining >50 km of prospective strike. Strong geochemical footprint +50 ppb Au soil and auger anomalies, multiple >100 g/t Au rock-chip zones, supported by Multiple high-grade drill hits. Existing NI 43-101 resources with >1.2 Moz Au in defined resources across the broader SMSZ project.

Challenges: Complex structural overprint with multiple deformation phases (D1–D3) and widespread transposition, Uneven historical data coverage creating data gaps along otherwise prospective strike, Discontinuous drill testing limiting resource conversion and confidence levels.

2026 Proposed Budget

Drilling	\$	1,307,000
Assays	\$	251,020
Operational Costs	\$	374,261

2026 Exploration Program

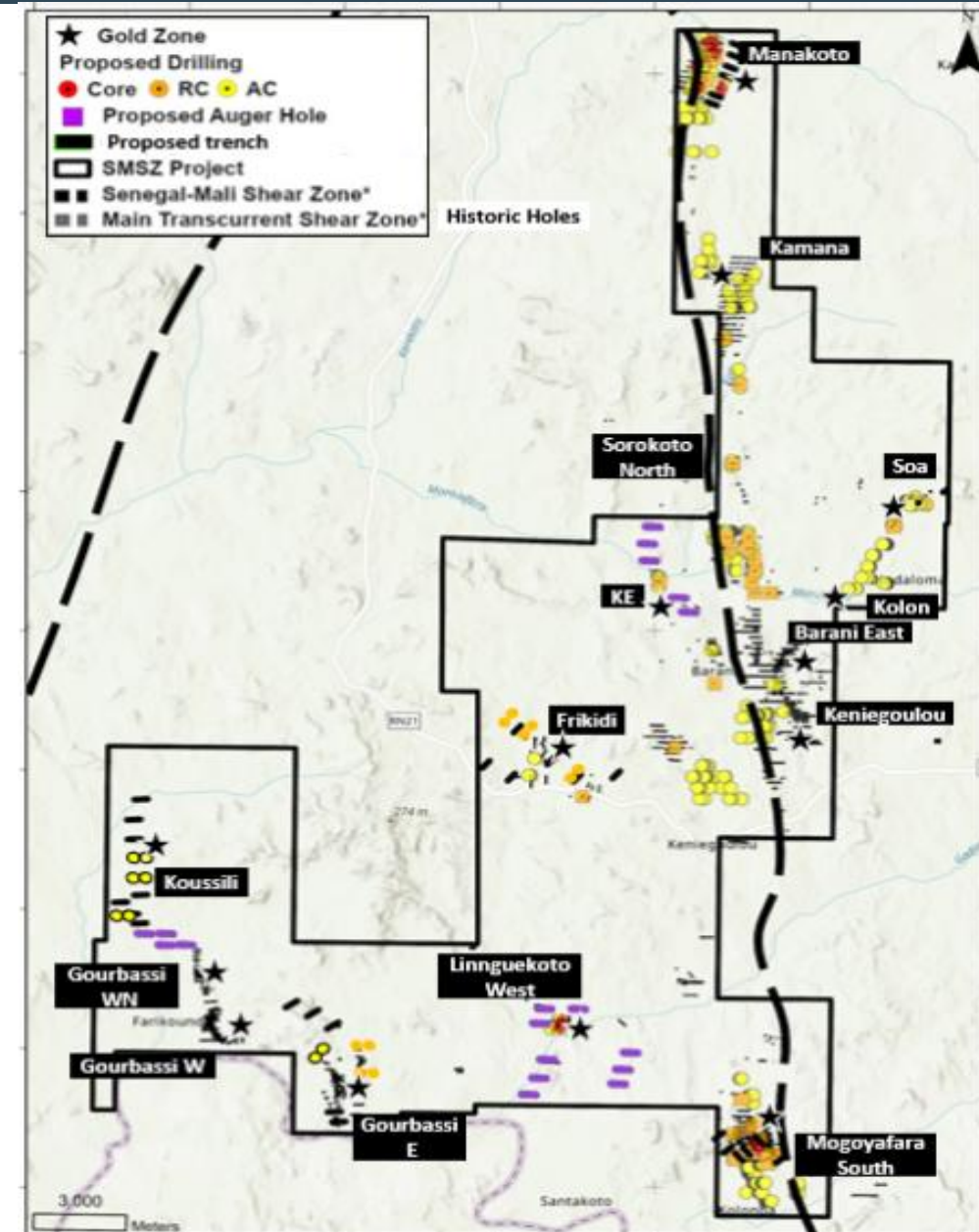
~15,000 m initial program proposed

Drilling proposed to start based on funding

Good results will be followed-up in real time

Initial focus on Mogoyafara South , Koussili, Frikidi, Soa, and Manakoto with continued follow-up of known gold zones and untested gold in auger anomalies

Geological mapping and prospecting added emphasis. Provides context and new gold zones

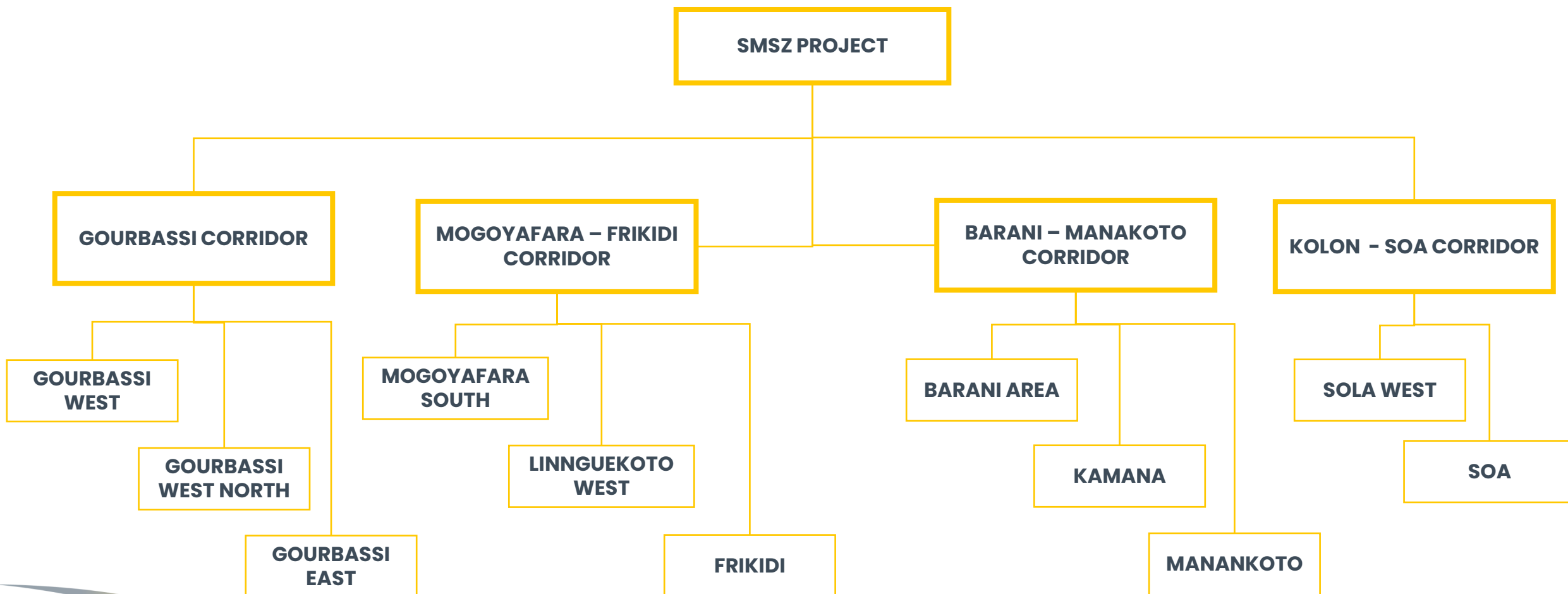


Summary Highlights; SMSZ Project

- **Regional scale 440 km² land package** spanning **43 km of the Senegal Mali Shear Zone** and a **11 km splay of the MTSZ**
- Regionally these structures are related to **11 gold deposits with mining at 9 of them**
- **Target model working** – Encountering similar geology to nearby Sadiola/Yatela and Sabodala mines¹
- **Measured and Indicated Mineral Resources** of 11.12 million tonnes grading 0.94 g/t gold totaling 336,800 ounces and **Inferred Mineral Resources** of 27.16 million tonnes grading 1.01 g/t gold totaling 879,900 ounces
- **Three main gold corridors with 24 known gold zones** with minimal exploration to date on 19 of them
- **Upside** – New gold zones and compelling soil anomalies to follow up with >100, >200 ppb gold
- **New zones and drill intercepts** – 2.04 g/t gold over 30 metres and 1.94 g/t gold over 30 metres
- **USD \$1-4 million exploration program**, is proposed for the 2026 drill season
 - ~15,000 m drilling – proposed with a focus on expanding the mineral resources
 - **New resource update expected end of 2026**

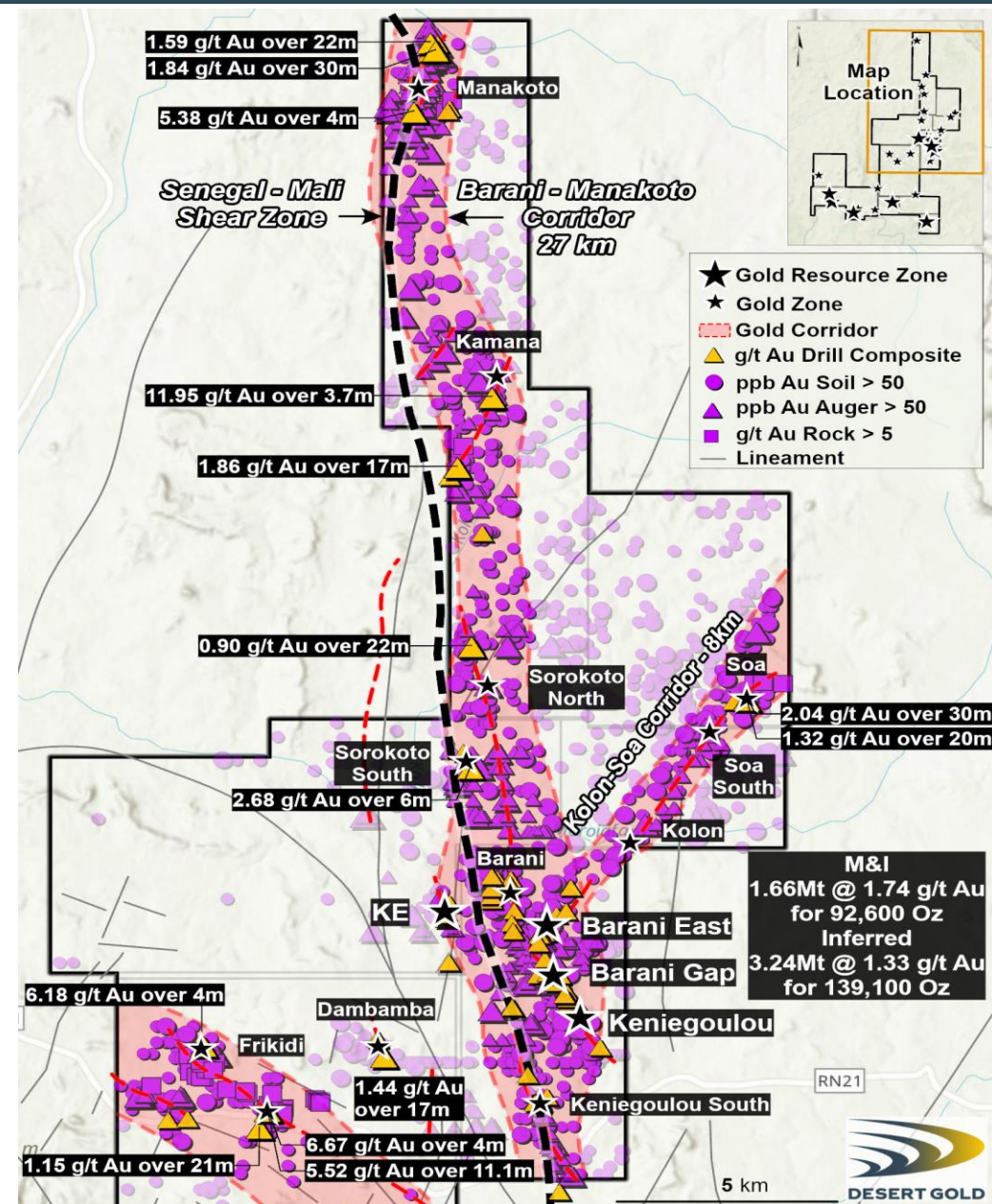


SMSZ Gold Corridors Summaries



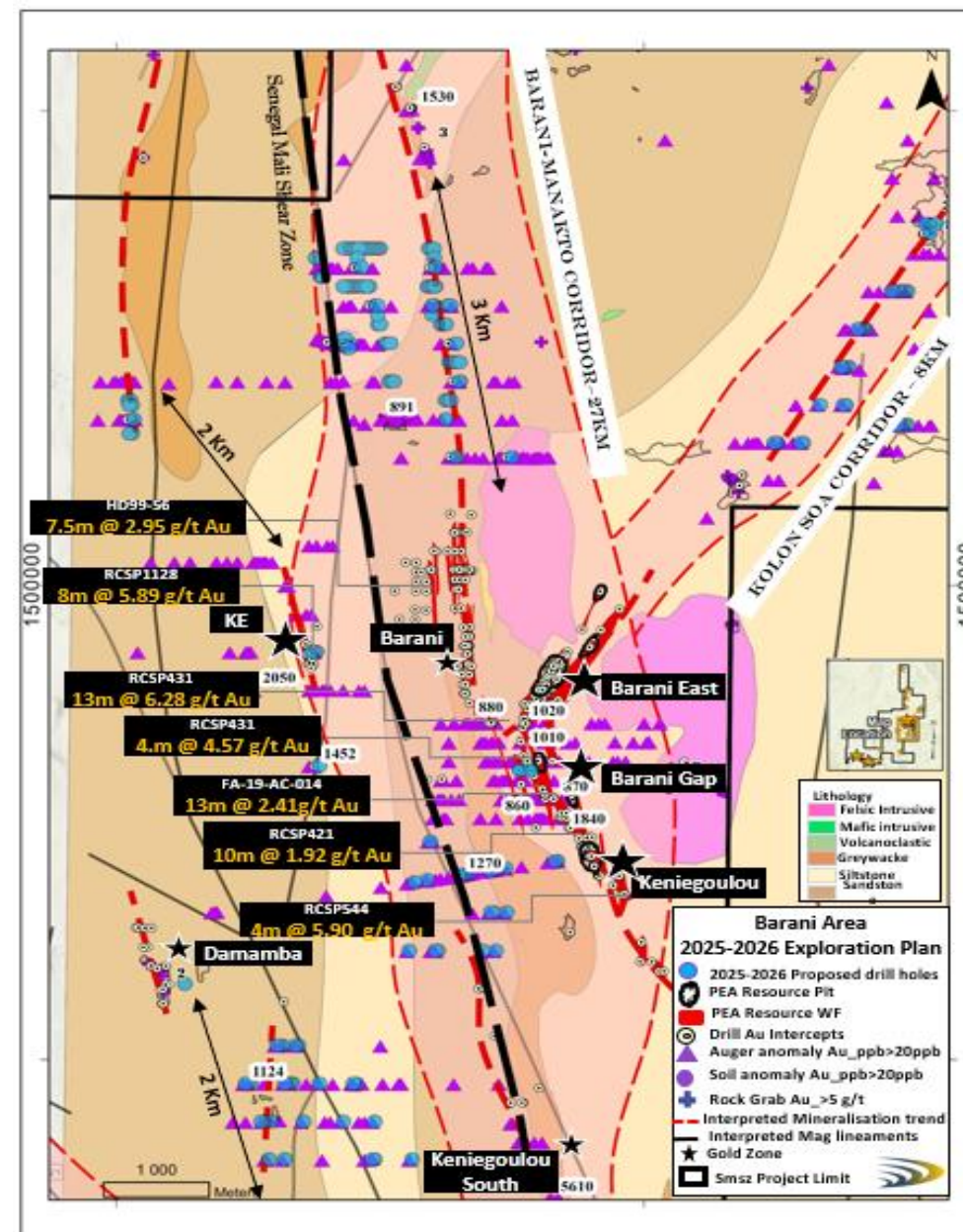
Barani–Manakoto and Kolon – Soa Corridors

- The Barani–Manakoto Corridor extends over **27 km** along the Senegal–Mali Shear Zone (SMSZ)
- The Kolon–Soa Corridor **~8 km** is the eastern splay corridor at structural intersections and flexures between NE-trending and N–S shear zones. underexplored despite significant drill intercepts and favorable geometry the corridor offers potential for new resource zones;
- The Barani–Manakoto and Kolon–Soa Corridors indicate a large-scale, structurally controlled Yalea-style orogenic gold system with over **230,000 oz Au** in M&I and **139,100 oz Au** in Inferred already defined;
- With proven resource footprints and multiple untested structural intersections, the corridor offers a clearpath to resource growth, positioning it as a strategic asset for near-term drilling and future development.



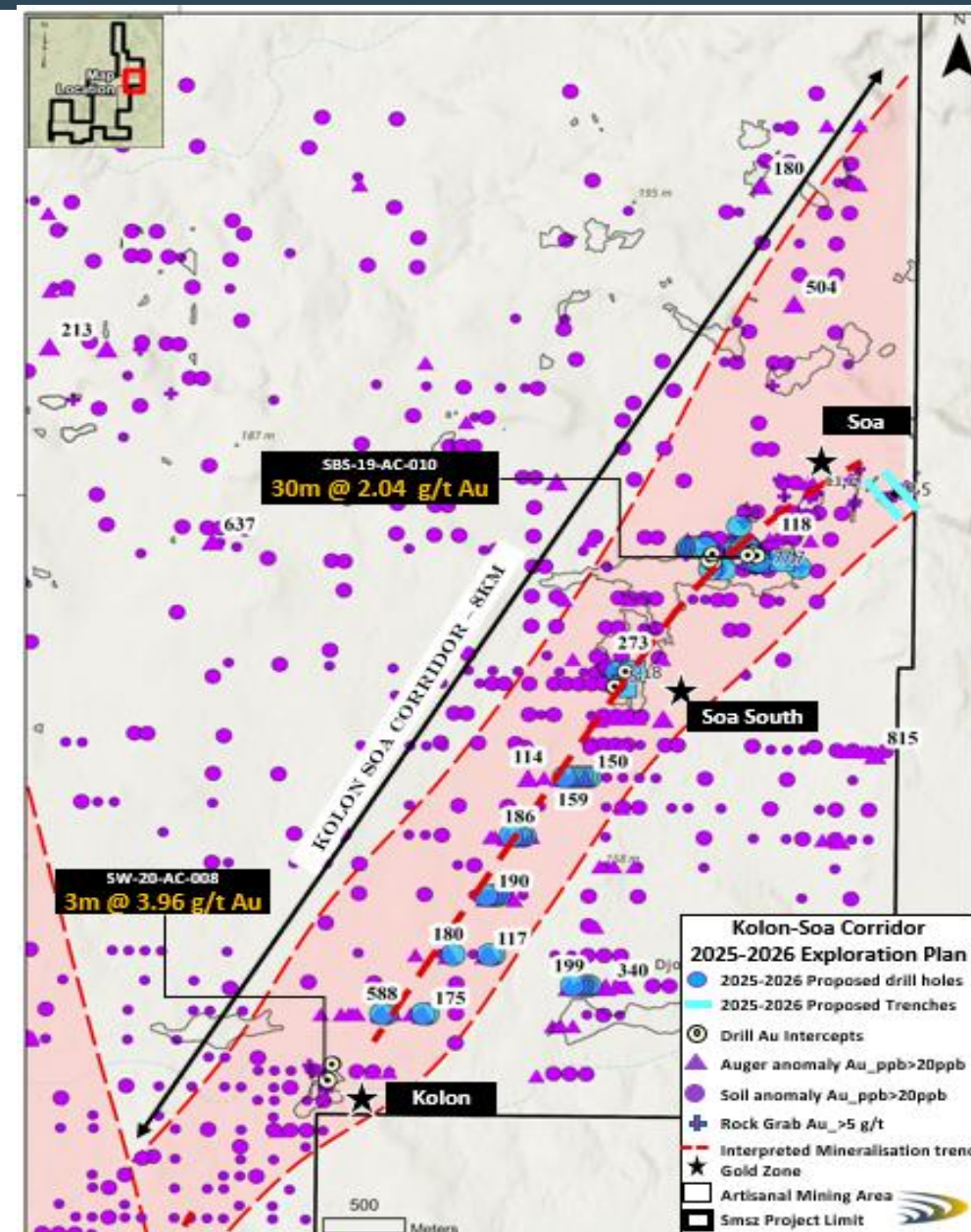
Barani Area

- Three partially defined zones in 4 km by 3 km area
- Barani East is the largest zone
 - Zone modelled for 1,000 m, working to extend to 3,000 m
- Barani and Keniegoulou
 - Multiple lenses of flat plunging mineralization
- Likelihood of finding more gold zones is deemed high
 - Geophysical targets have strong correlation with known gold zones
 - 2024-tested gold-in auger anomalies returned 3.35 g/t over 3 m, 1.11 g/t Au over 4 m, 0.83 g/t Au over 6 m and 0.57 g/t Au over 5 m
- New drilling proposed to continue to expand the Barani Gap mineralization and to test additional high priority Au-in-auger anomalies



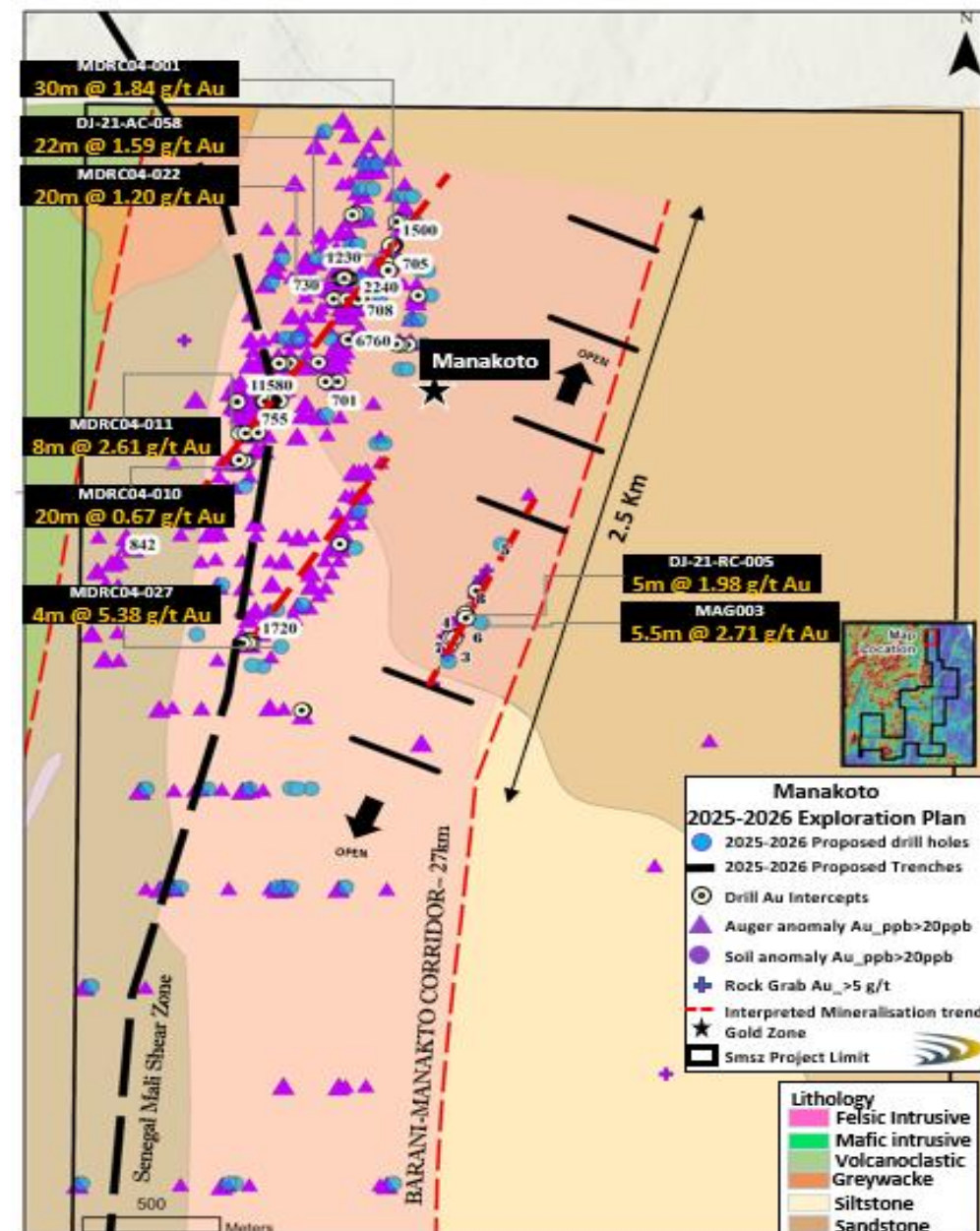
Kolon – Sola Corridor

- 8 km long, NE extension of structures that control gold mineralization at Barani East Zone
- Desert Gold has carried out the first drilling in the area
- Limited drilling has returned intercepts to 2.04 g/t gold over 30 metres (true width unknown)
- Three artisanal mining pits >100 m long
- Numerous smaller pits
- Geophysical (IP) surveys and auger drilling completed supporting NE gold mineralization trend
- Additional AC and RC drilling planned
- Trenching to test subsurface continuity of multi-directional high-grade vein system (rock samples up to 77 g/t Au)



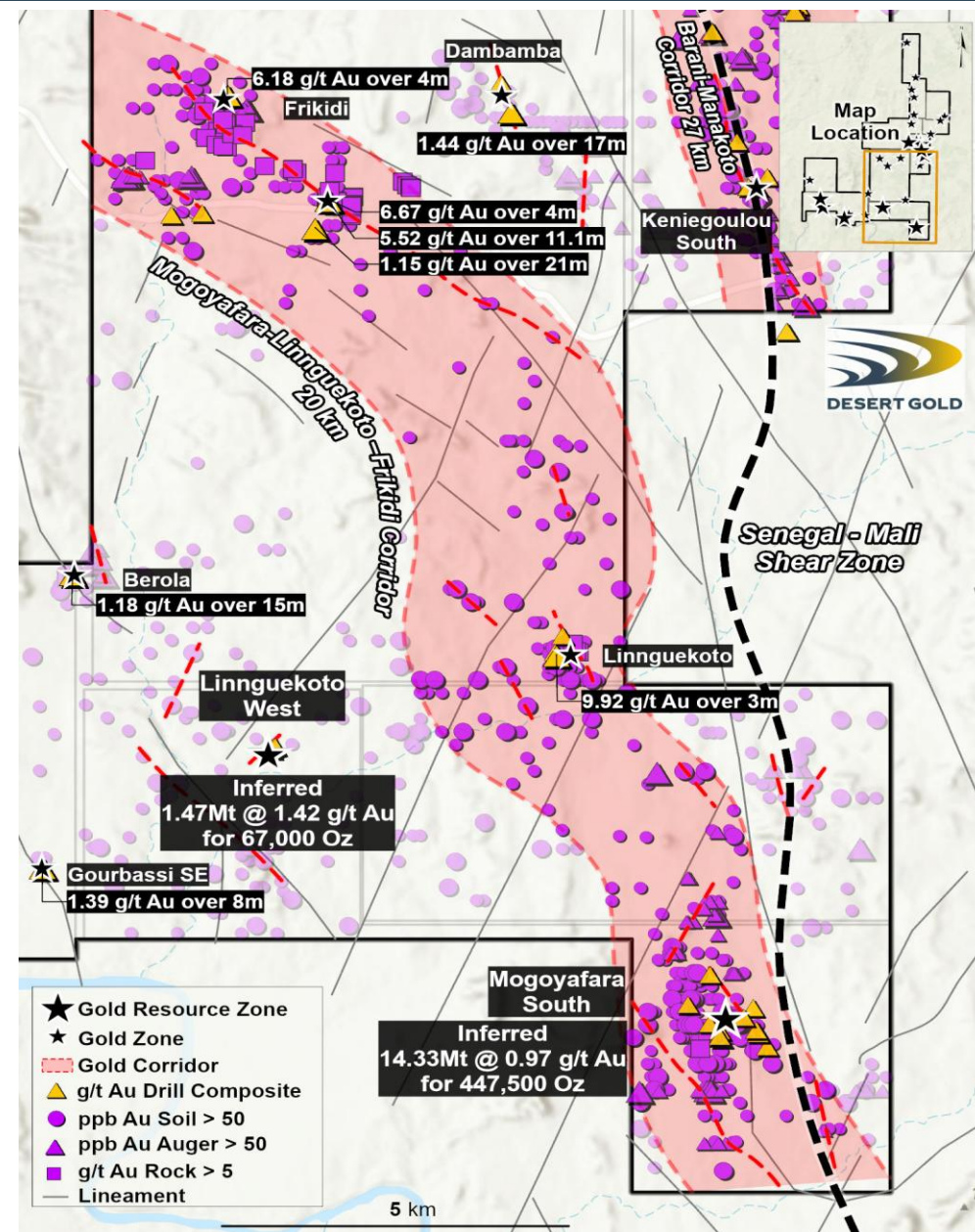
Manakoto

- Potential for multiple NE-trending gold zones
- Best drill intercepts to 1.84 g/t gold over 30 metres
- Inferred mineralized trends >2 km long
- Numerous drill intercepts to follow-up and untested gold-in-auger anomalies (> 11,500ppb) with locally correlation with gold-in-soil values.
- Mineralized system seems open to north and south for at least another kilometer
- Furthest east target area is centred by a 150 metre long open pit that is approx. 10 metres deep and 20 metres wide. Trenching to confirm north and south strike extension of the mineralization



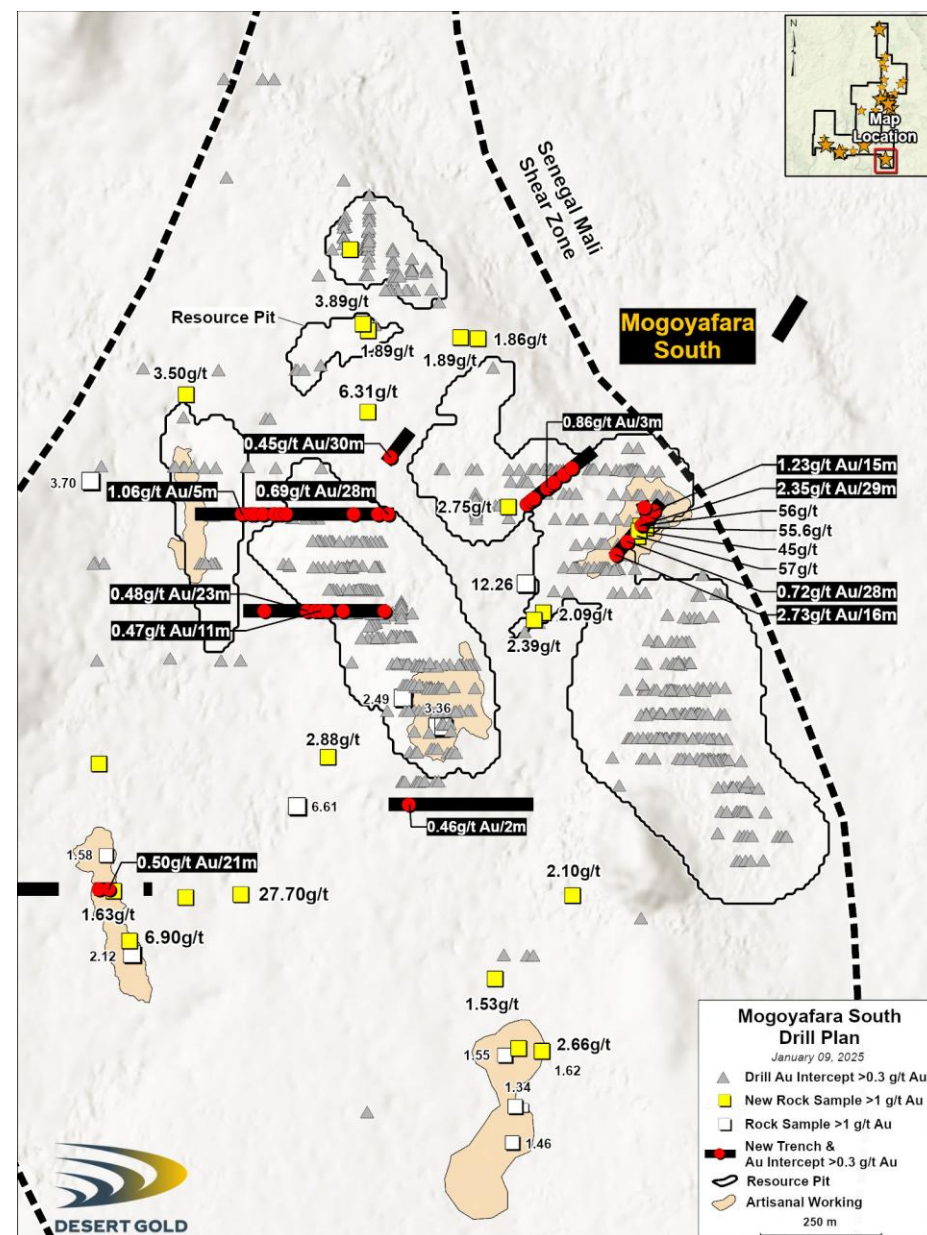
Mogoyafara – Linnguekoto – Frikidi Corridor

- The Corridor lies within the Birimian crustal-scale gold-bearing , the Senegal Mali Shear Zone (SMSZ) extends over ~**20 km** in strike length.
- Structurally complex zone with multiple shear zones, lineaments, and interpreted gold corridors
- High-density of **Soil and Auger anomalies > 50 ppb Au**, Rock chips top grade > **100 g/t Au**
- **Over 500,000 oz inferred Au** with high-grade intercepts
- Strategic location and robust geochemical & structural support indicate clear path to resource growth and discovery



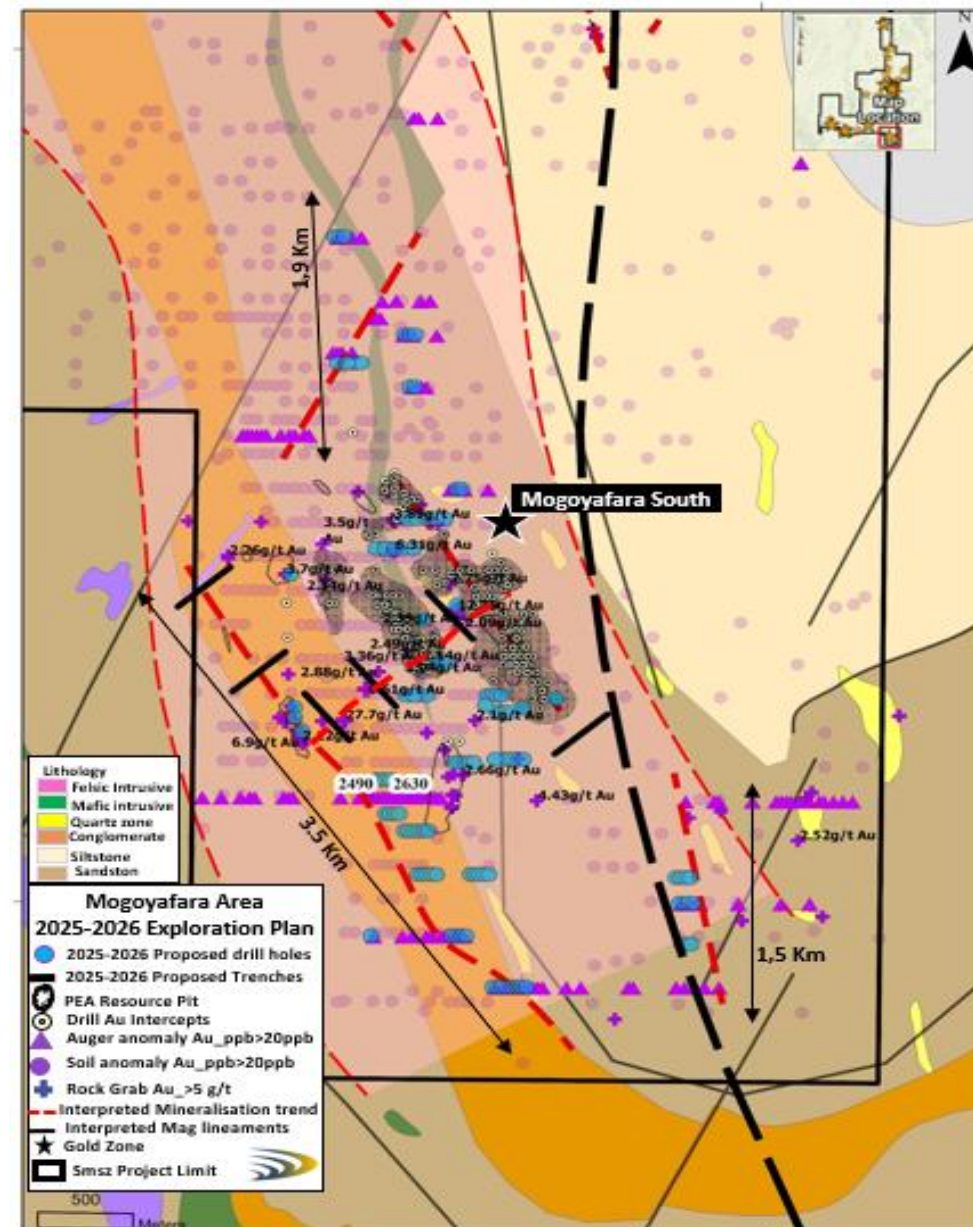
Mogoyafara South

- Numerous northerly- and NW-trending gold-mineralized structures
- Located just east of the Senegal Mali Shear Zone**
- Intercepts to **2.15 g/t Au over 29 metres (estimated true width 25 metres)**, **2.04 g/t Au over 41 metres (estimated true width of 35 metres)** and **1.40 g/t Au over 55 metres (estimated true width of 40 metres)**. Higher grade intercepts include **20.87 g/t Au over 6 metres (true width is unknown due to lack of data)**. 24,362 metres of historic drilling in 329 holes by Hyundai
- Open to depth and along strike with anomalous grab samples indicating that the zone could extend 1,200 metres to south
- Recent ground magnetic surveys show excellent correlation between magnetic highs and gold intercepts suggesting significant scope for discovery.
- Newly discovered trench results adds new mineralization both inside and outside of current pit envelopes



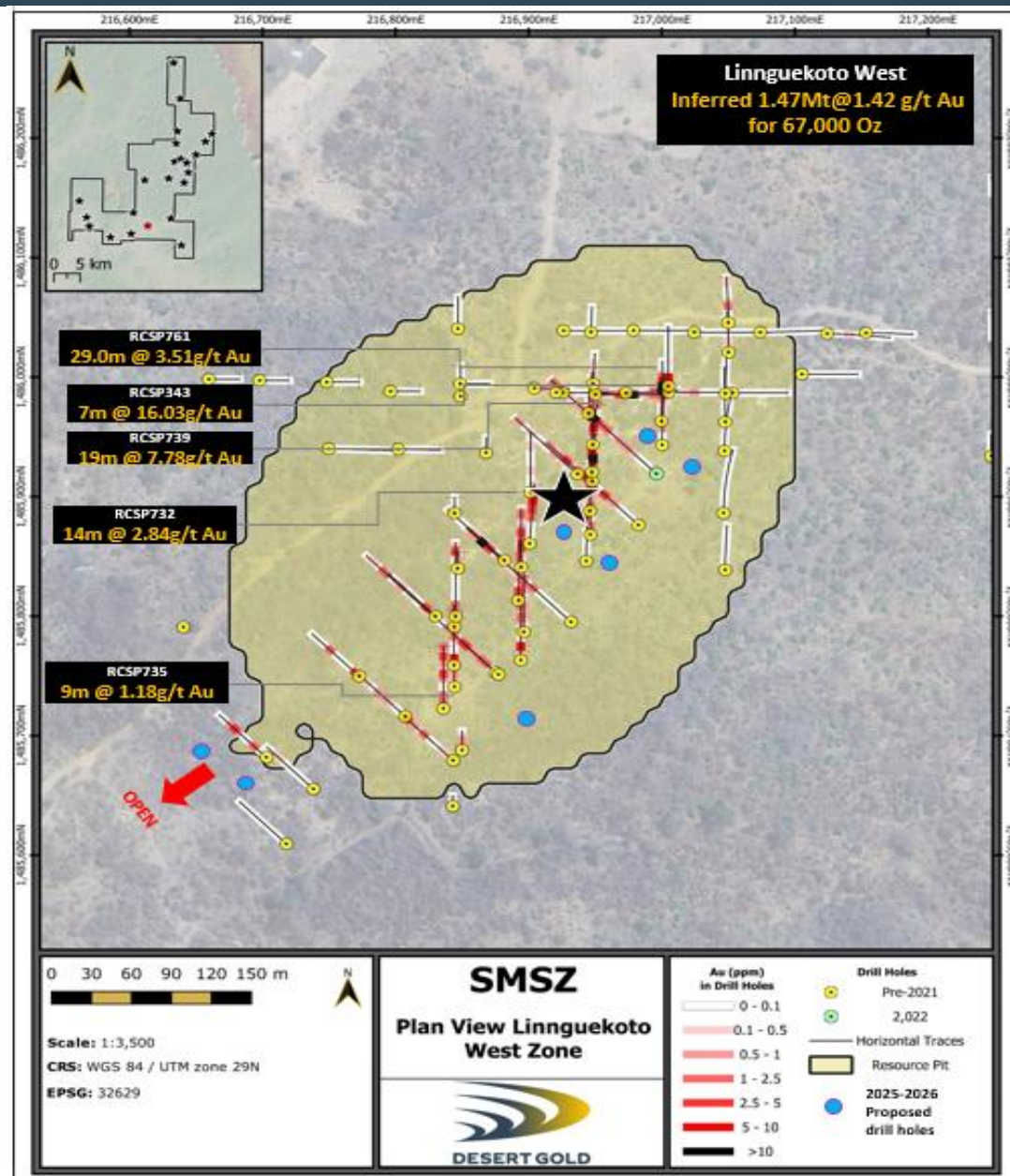
Mogoyafara South Region

- 3,5 km by 500 m wide zone of anomalous soils and rocks supported by 200 m long artisanal open pit and workings aligned along a 1.4 km zone of soil and rock anomalies to south of know zone on magnetic low area, which is more typical of gold zones.
- 2km by 200 NE trending mineralization supported by gold in rock grab (>27 g/t), trenches, cross cutting main NW trend
- 1.5 km long zone of gold-in-soil and gold-in termite anomalies aligned along a NE-trending magnetic structure in the east part of the property.
- Magnetic high feature (mafic intrusives) associated with the Mogoyafra Deposit extends for 5 kms vs current defined deposit traced for 1.9 km



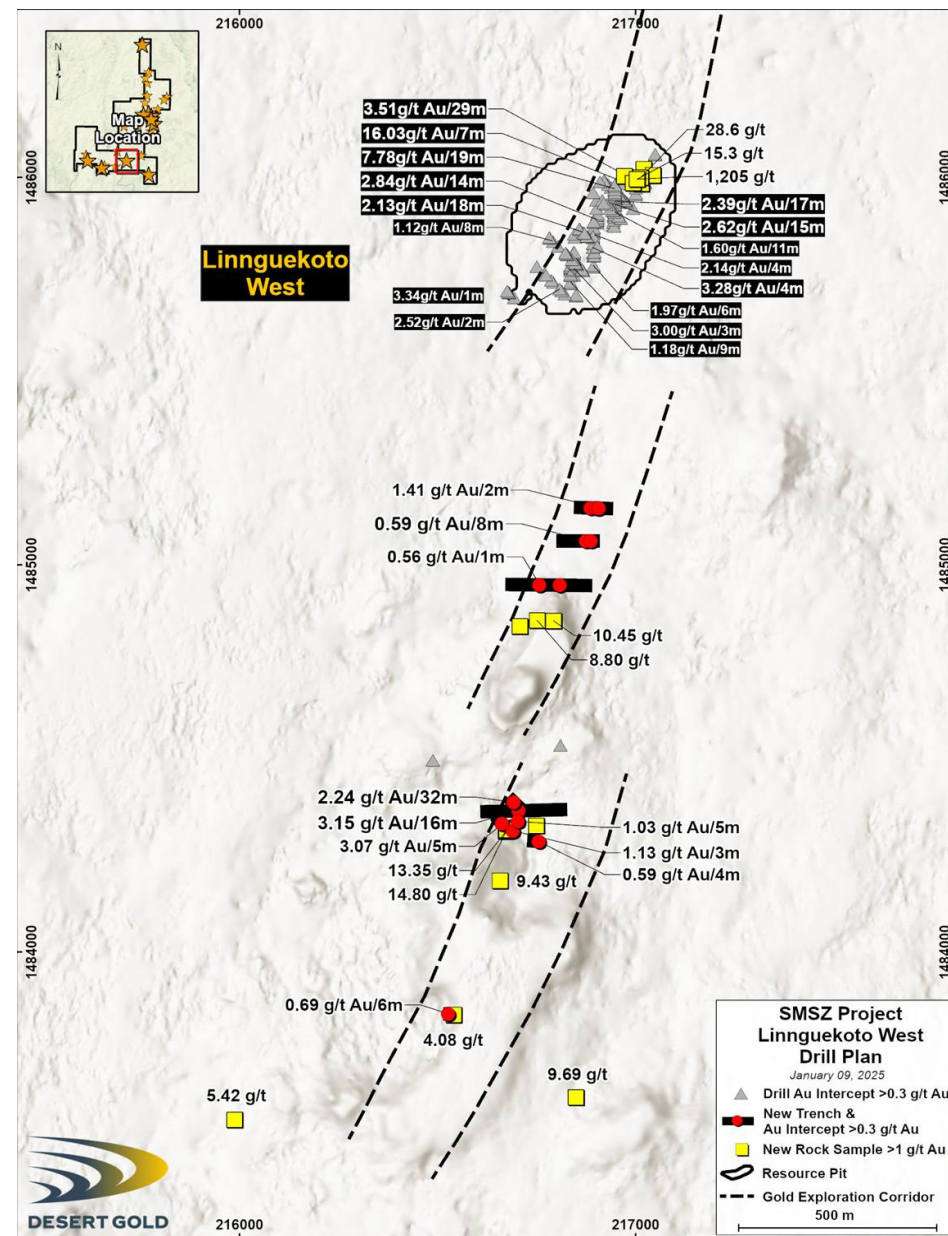
Linnguekoto West

- NE-trending gold-mineralized structures
- Best fit resource modelling suggests a steep west dipping, generally higher grade, 1.5 to 7 metre wide gold bearing lens, that is both cut by and related to, up to six, shallow-east-dipping subordinate gold-bearing lenses
- Grades to **16.07 g/t Au over 7 metres (estimated true width of 4.0 metres), 7.78 g/t Au over 9 metres and 3.51 g/t Au over 29 metres (estimated true width of 8 metres)**
- **2022 drill hole - 1.83 g/t Au over 27 metres (estimated 13 m true thickness) including 2.25 over 20.7 metres and 26.5 g/t Au over 1.0 metres. As well, this hole returned a new gold lens intercept of 0.61 g/t Au over 23.8 metres (estimated 11.5 m true thickness)**
- Six core, RC and AC holes planned as a first pass over original resource area



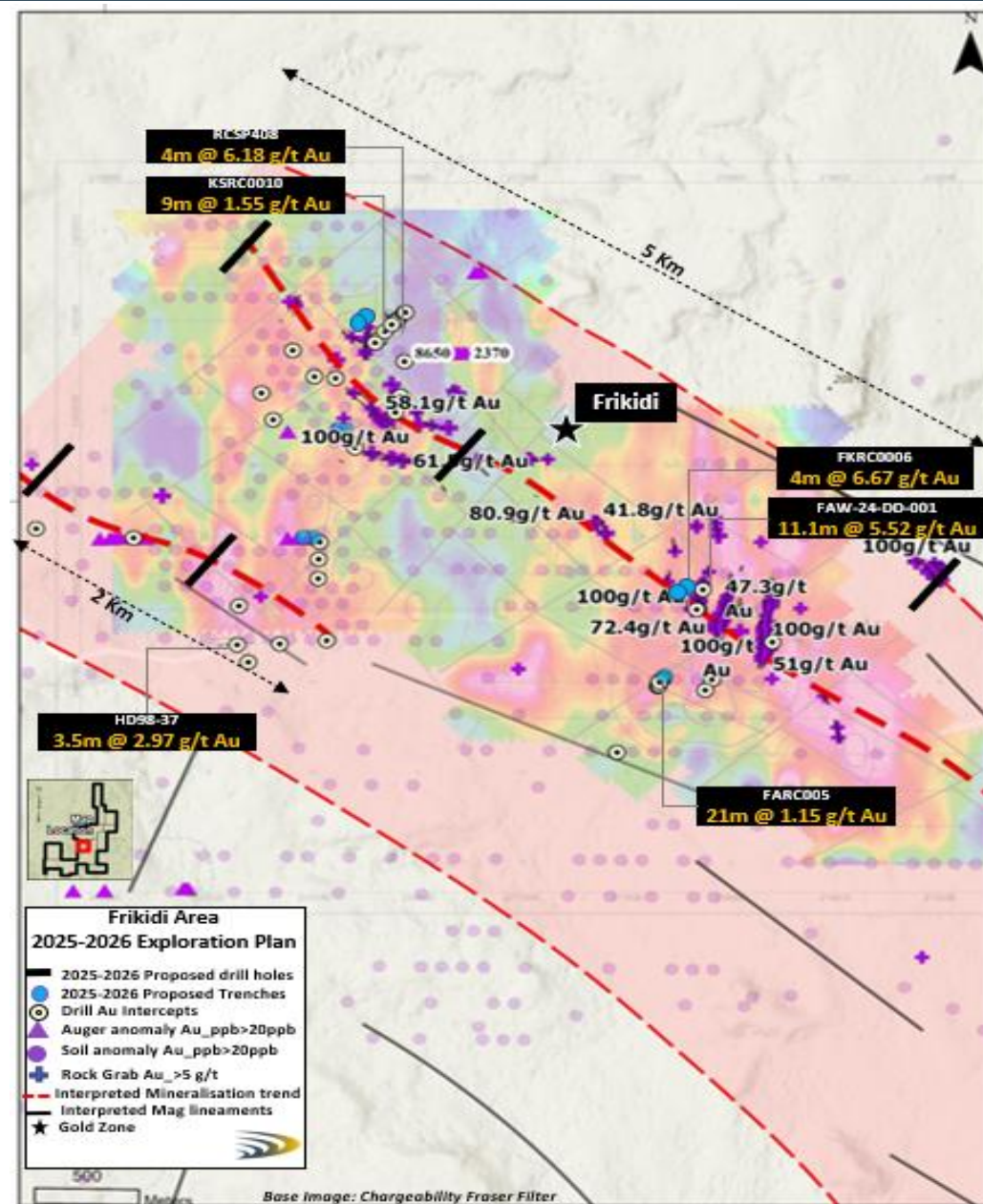
Linnguekoto West

- Recently discovered data highlights additional gold mineralization located to the south of the Linnguekoto Deposit
- Highlights include trench results that returned 3.15 g/t Au over 16 m, 2.24 g/t Au over 32 m, high grade grab samples that expand the potential target areas and close association with an 800 m long laterite ridge, which may cap the southernmost target



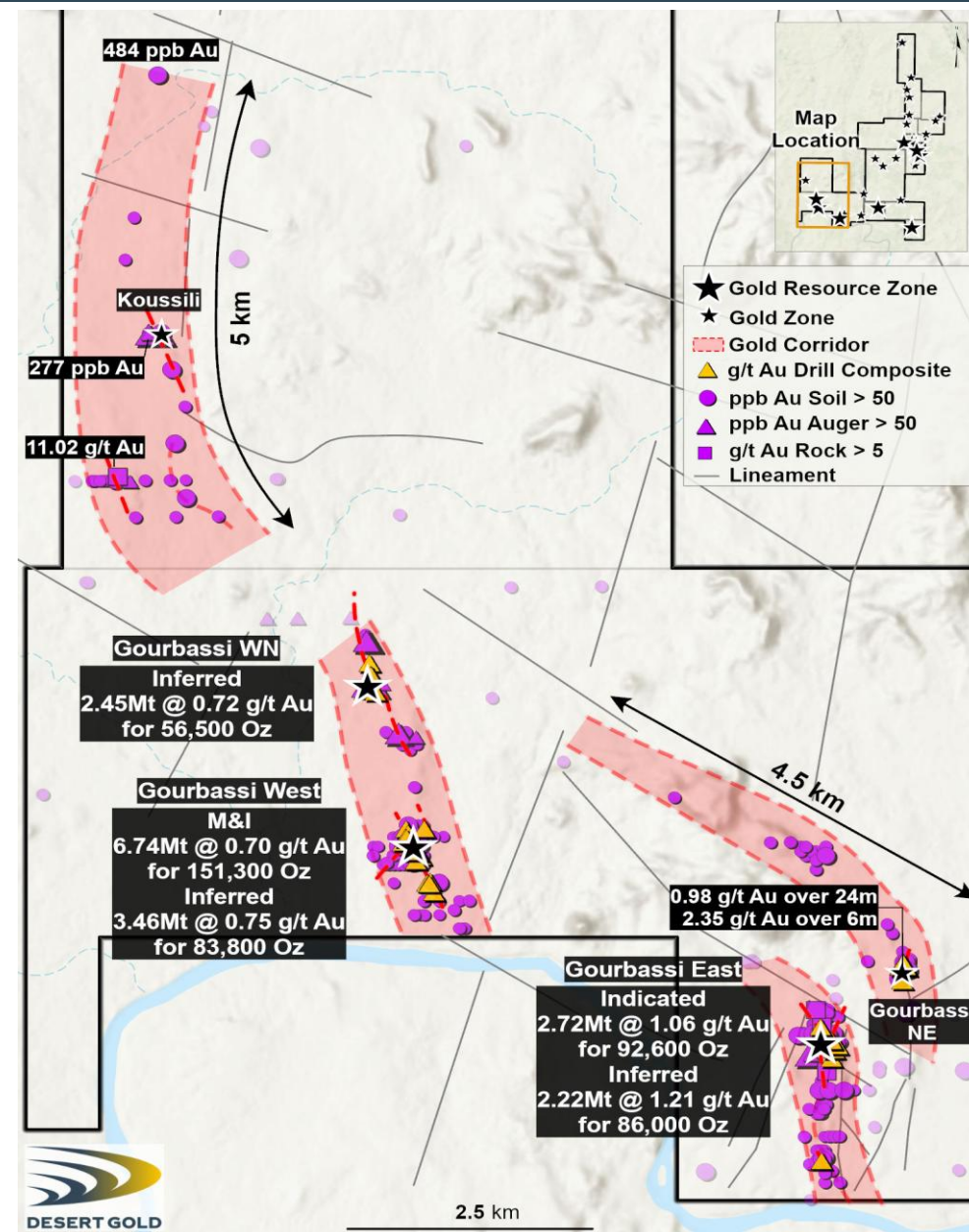
Frikidi Area

- Numerous northerly- and NE-trending gold-mineralized structures
- Grab sampling** returned the **best results** from the entire property with values to **>100 g/t Au**
- Magnetic data** suggests a 5 km by 1.5 km area of cross-cutting alteration
- Follow-up drilling returned drill intercepts to **5.52 g/t over 11,1 m** (true width unknown) and **6.67 g/t over 4 m** (true width ~3m).
- Auger** drilling returned to **8,650 ppb Au**, one of the highest on the property
- Untested IP geophysical chargeability anomalies



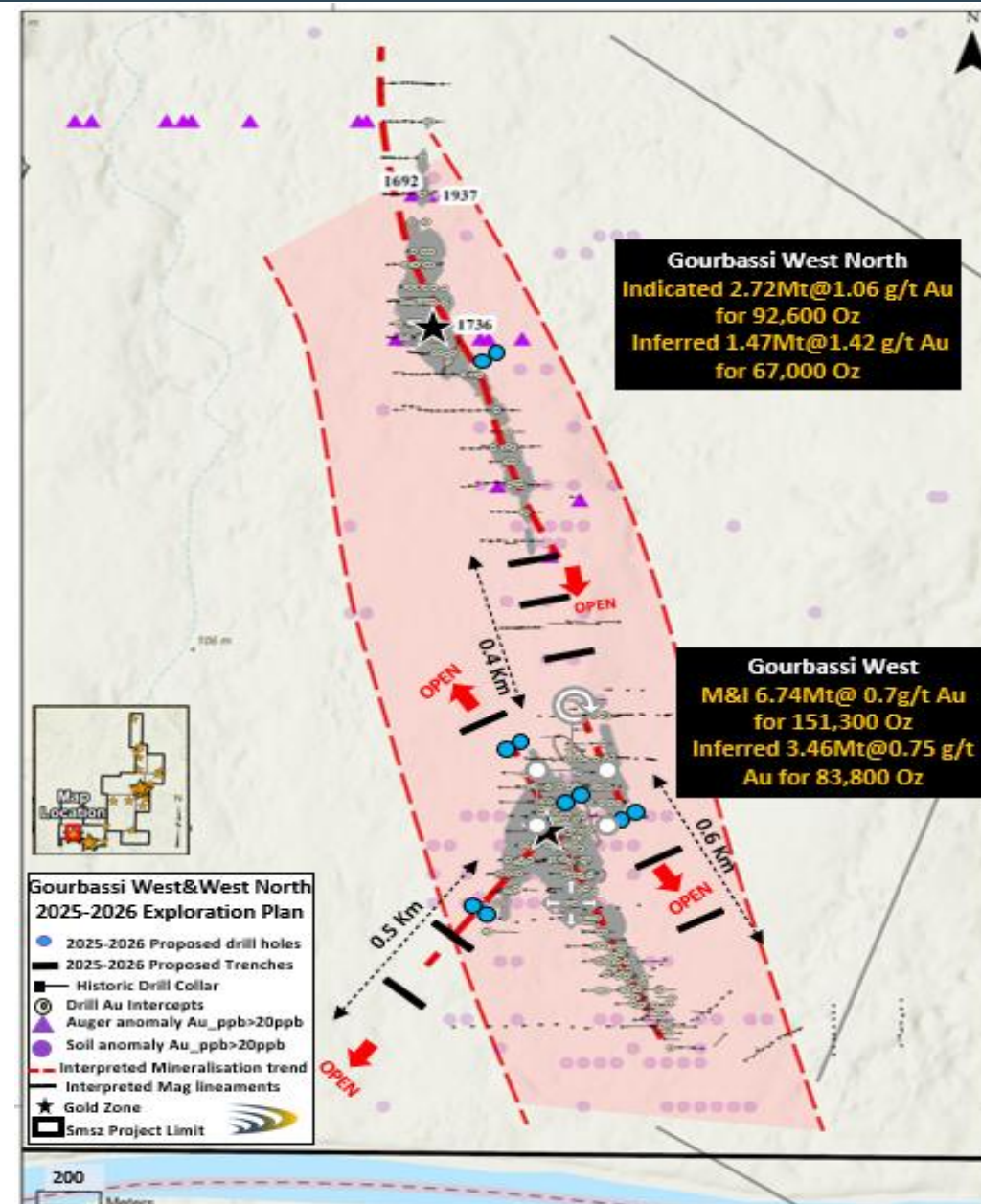
Gourbassi Corridor

- The Gourbassi gold corridor is a ~ 10km steep, shear-parallel NW to NS structural zone segmented by ENE–E–W cross structures, indicative of transpression;
- Strong spatial coincidence between soil Au anomalies, mapped quartz veining, and known resource footprints (Gourbassi East, West, and West-North);
- **Over 470,000 oz Au** in combined M&I and Inferred resources across multiple deposits,
- Untested right-step zones, fold hinges and soil-geochem overlaps present immediate opportunities to resources grow and discovery



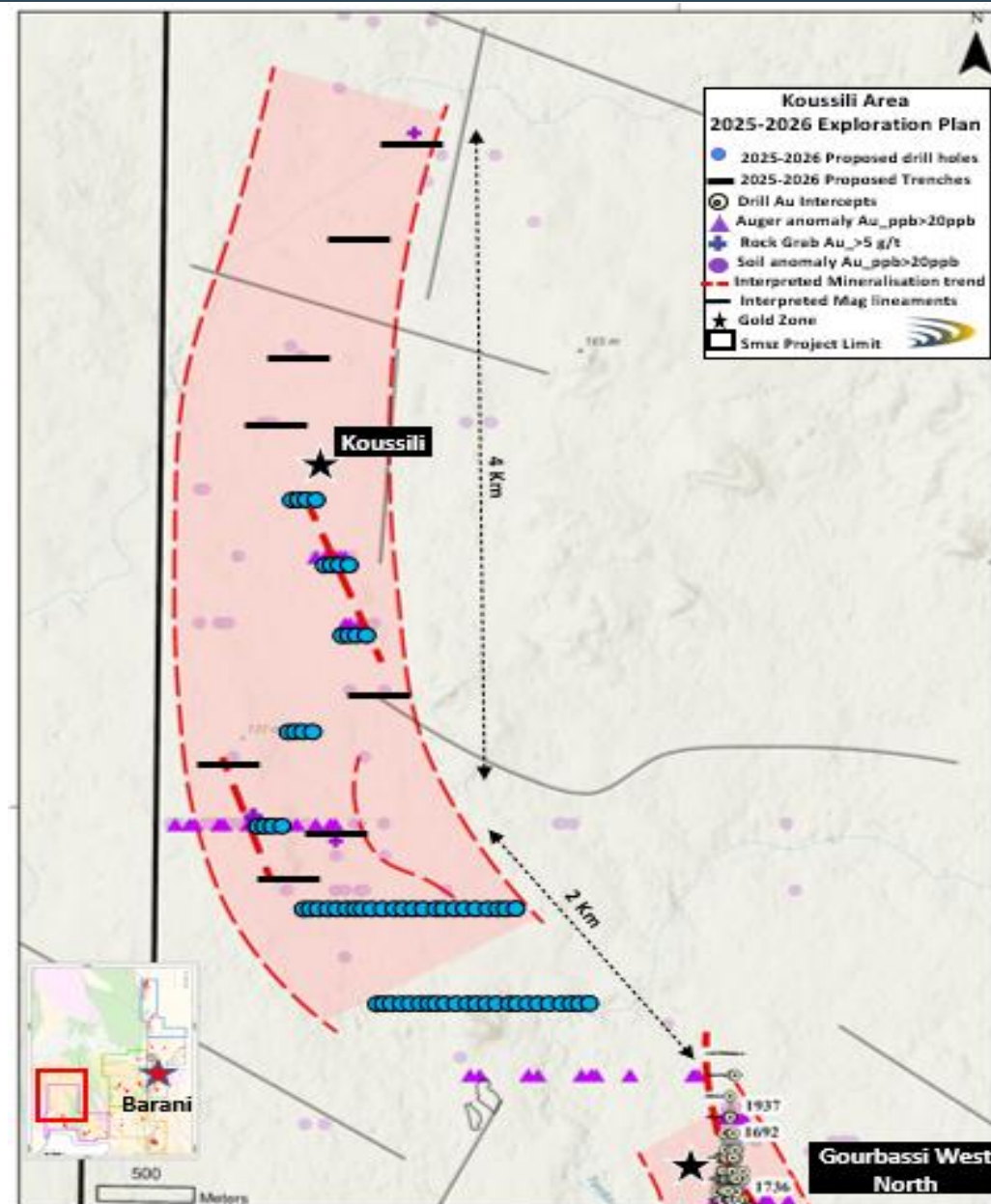
Gourbassi West & West North

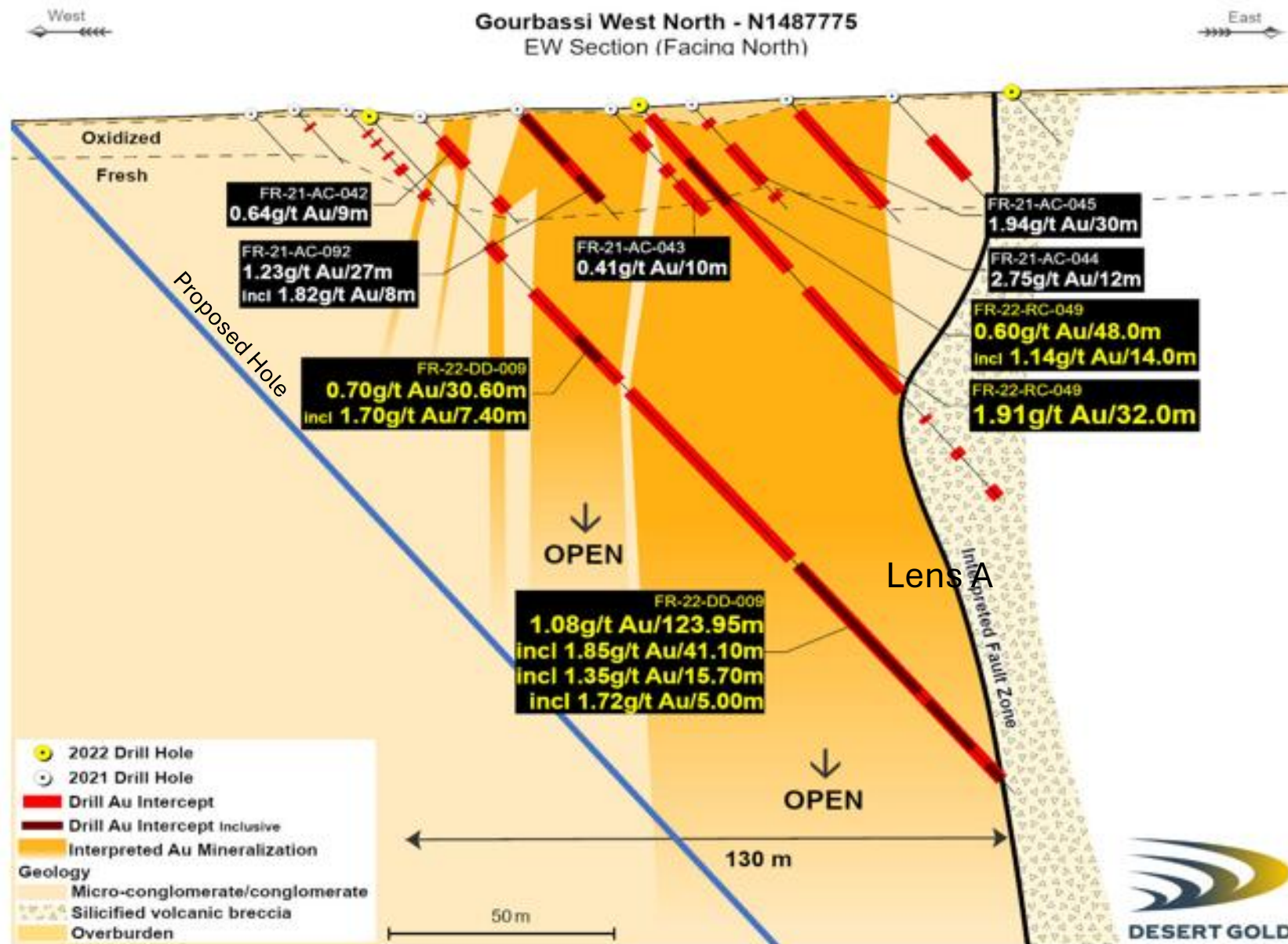
- Au-in-auger discovery at Gourbassi West North
- Northerly and northwesterly trending gold mineralized structures modelled
- **Total over 4km strike length**
- Intercepts to **1.08 g/t Au over 123.95 m estimated true width 75 metres)** at **Gourbassi West North, open to depth below 175 metres**
- Drilling proposed to test strike extention and down plunge mineralization at structural rotation areas, suggesting potential for wider zones and higher grades ore shoots. More drilling will be likely be planned and carried out based on results.
- Cost effective trenching to test strike north and south continuityof the mineralization ,specially at Gourbassi West

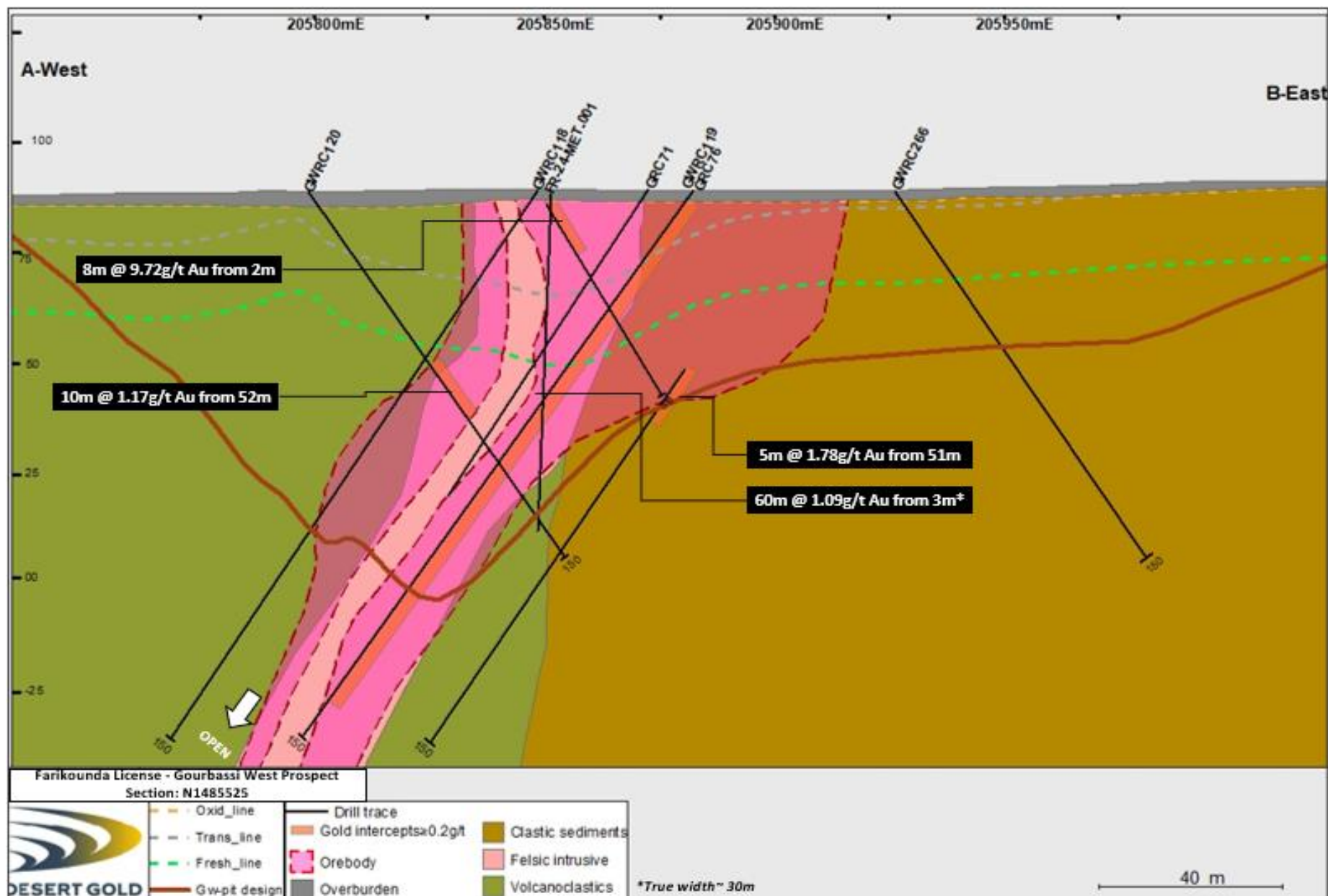


Koussili

- A total over 6km of Northerly and northwesterly trending gold mineralized structures
- 2km long potential curved strike continuity with Gourbassi West North deposit
- Gold in soil supported by gold in auger drilling and rock grab samples for artisanal pits
- First phase drilling proposed to test strike extension, fill gaps and confirmation of sub surface mineralization .
- Cost effective trenching to test strike north and south continuity of the mineralization ,specially

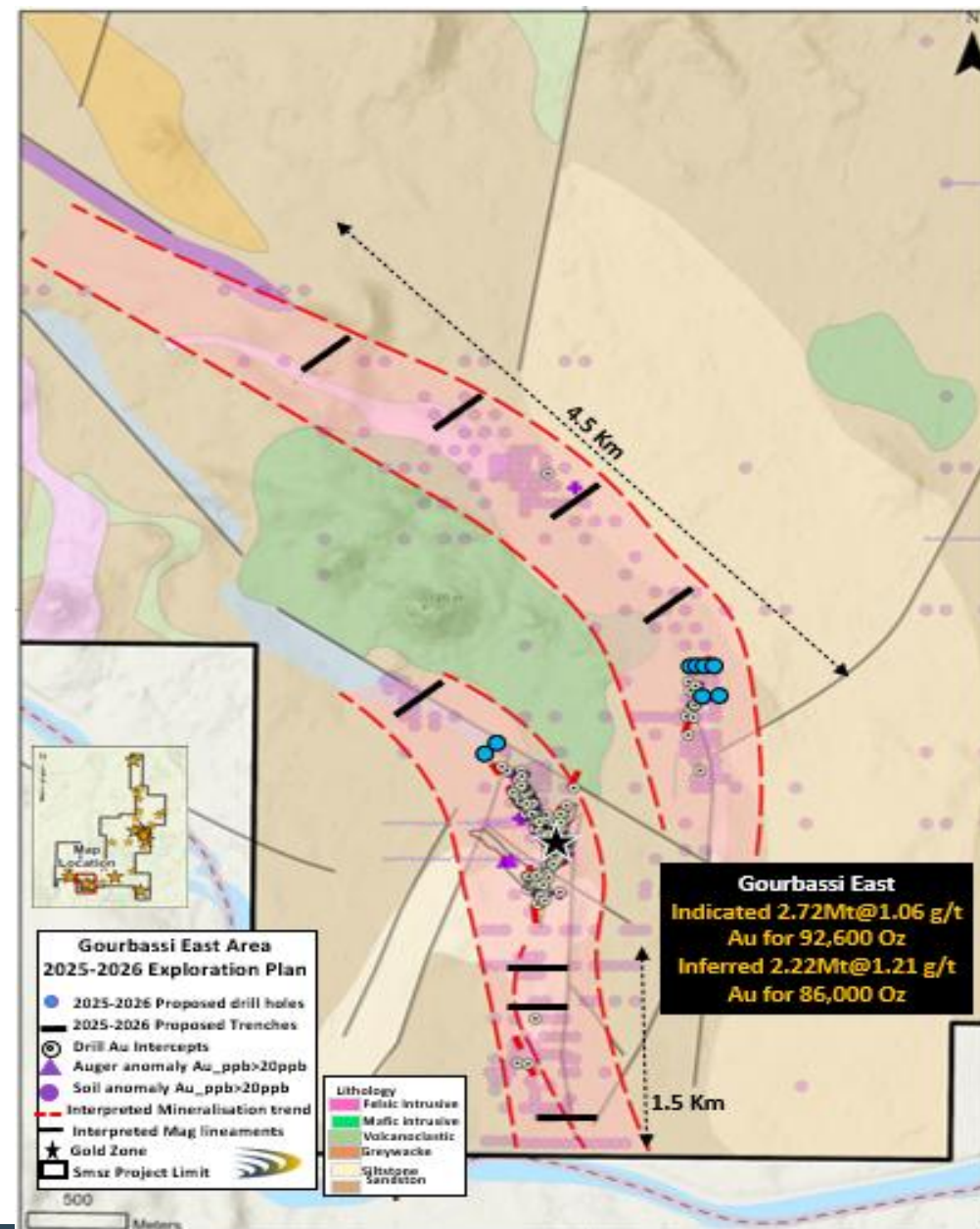






Gourbassi East

- At least seven, north-northwest trending lenses of gold mineralization up to 37 metres wide.
- Traced for approximately 800 metres along strike to 170 metres depth.
- The deepest hole returned 7.49 g/t gold over 11 metres (true width approximately 6 metres).
- Magnetic and mapping data, indicates that the thickest part of the gold zone lies near a northerly-trending, shear zone contact with a northwesterly-trending magnetite iron formation.
- Induced polarization resistivity high anomalies, correlate quite well with the trend of the gold mineralized lenses.
- Potential 4,5km mineralized NW trend at intrusive contact and zones of dilation



TIEGBA GOLD PROJECT

Côte d'Ivoire



Tiegba Project, Côte d'Ivoire

Pipeline Stage: Target Identification (TI)

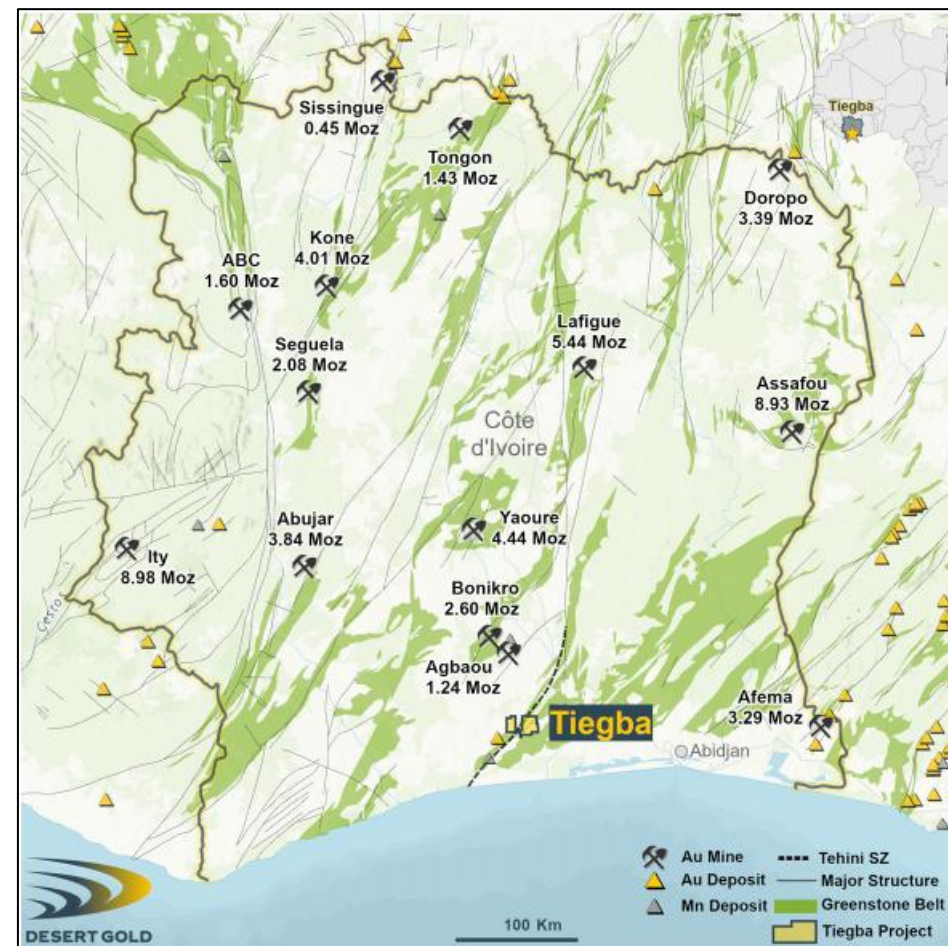
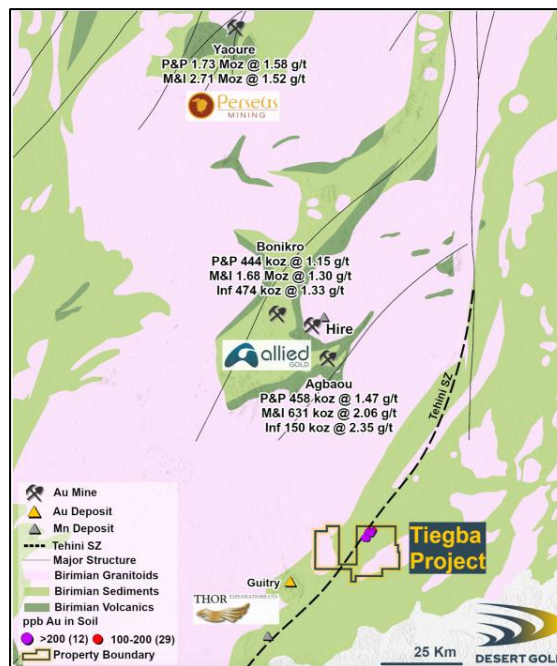
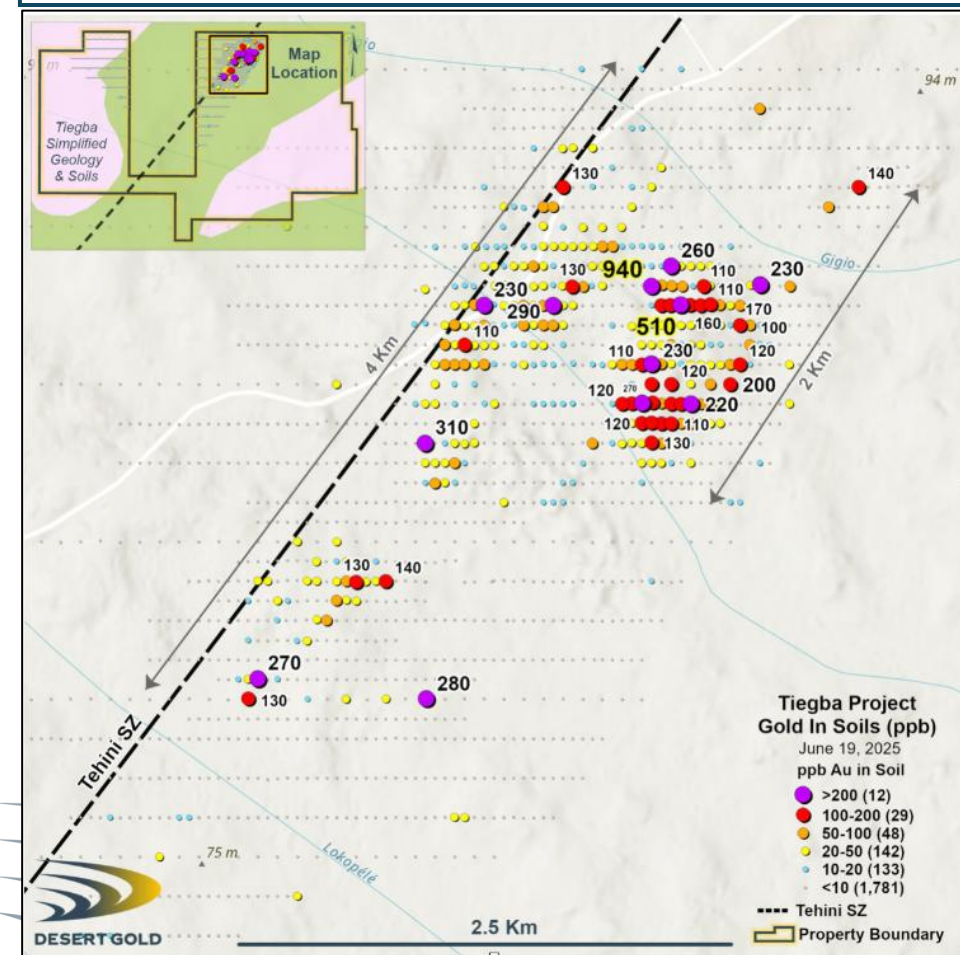
Target Model: Greenstone shear and Intrusion-hosted deposits (vein & disseminated)

2025 Budget: \$ 661,700

Next Decision Point: March, 2026

Program: Reconnaissance mapping + Surficial work (Soil Geochem, rock grab, grooving) + TI drilling (Wide spaced AC) + Drill Testing (RC drilling) + Drone Geophysics (AeroMag)

3,500m AC + 2,500m RC + 164 line-km



Tiegba Project, Côte d'Ivoire

Target: Greenstone shear and Intrusion-hosted deposits (vein & disseminated).

2025 Objectives & Program:

Limited data collection coverage: project wide regional geology mapping 297km², coupled with collection of 500 rock grab samples, 164 line-km drone geophysics (Magnetism).

Limited soil geochemistry survey with delineation of a large 4.2 km x 2.1km gold-in-soil anomalous NE trend along key regional structure the Tehini Shear Zone: Infill and expanded soil geochemistry survey 3500 samples to be collected.

Multiple parallel mineralized trends with values exceeding 900 ppb gold : 500m grooving for near surface structure and gold anomalism validation; testing with 3500m AC drilling and 2500m RC drilling of positive follow up and mineralization rooting validation.

Progress target one pipeline stage, with success based drilling program.

Overall objectives: To identify and define limits of mineralization/structural/alteration corridor, with the potential to host a >1Moz Au deposit

Main program components: Surface work (mapping+soil+rock+grooving), Target delineation drilling (wide spaced AC) + Drill Testing (RC drilling)

3,500m AC + 2,500m RC + 164 line-km drone geophysics.

Decision Point & Date: TD drilling showing continuity of gold mineralization + alteration - DT results showing horizontal and vertical continuity of economic grade supporting potential for gold deposit – Final decision point in March 2026 (upcoming November presidential election impact)

2025 Proposed Budget

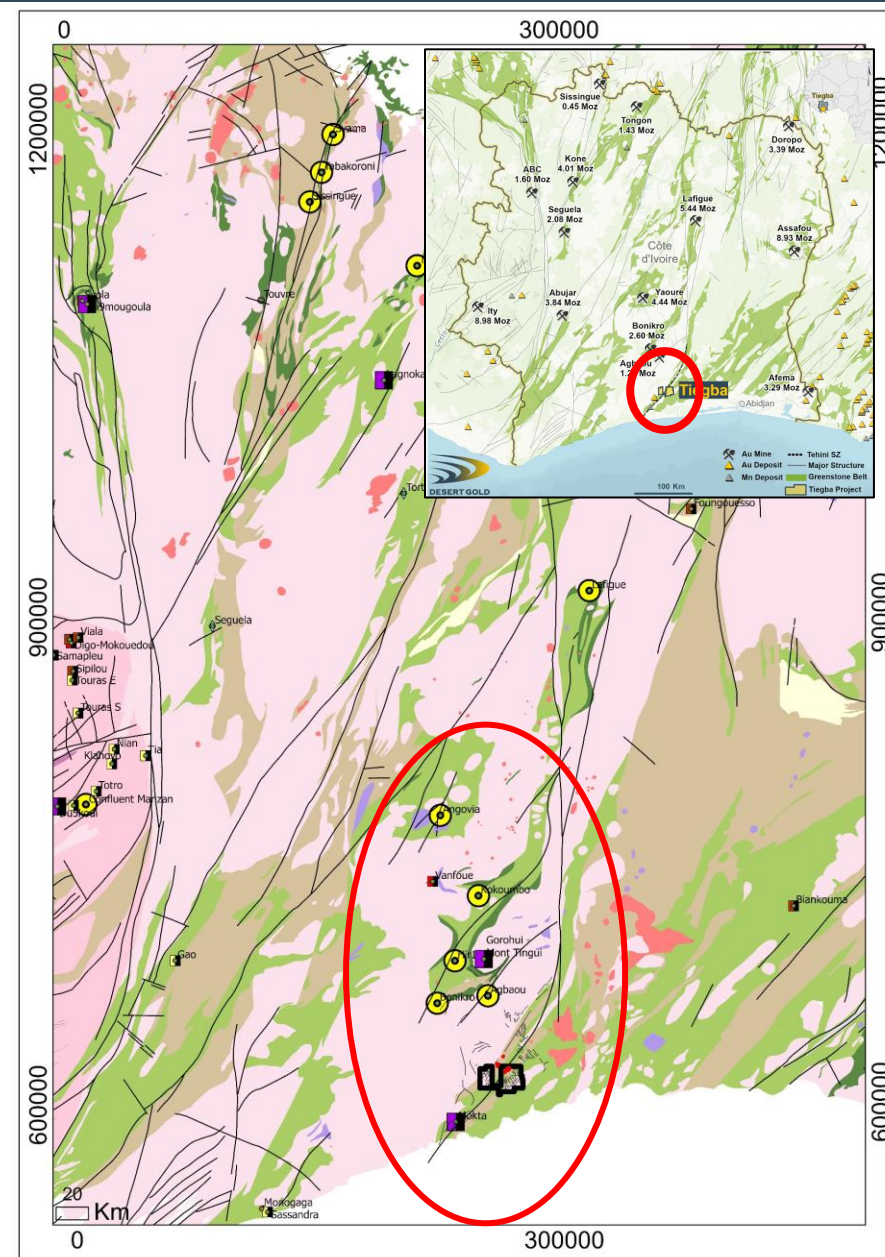
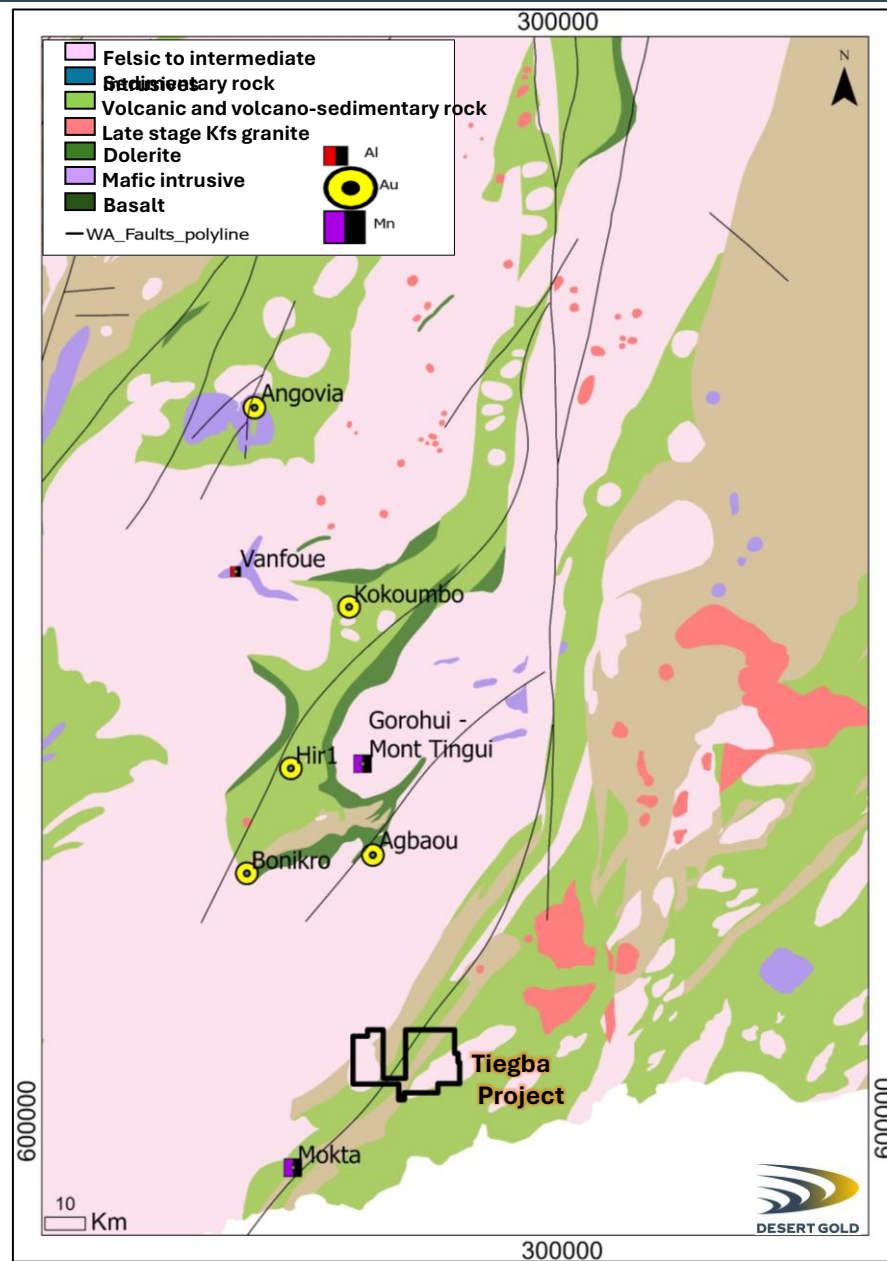
Drilling	\$	453,000
Assays	\$	161,700
Technical Studies	\$	47,000
Total	\$	661,700

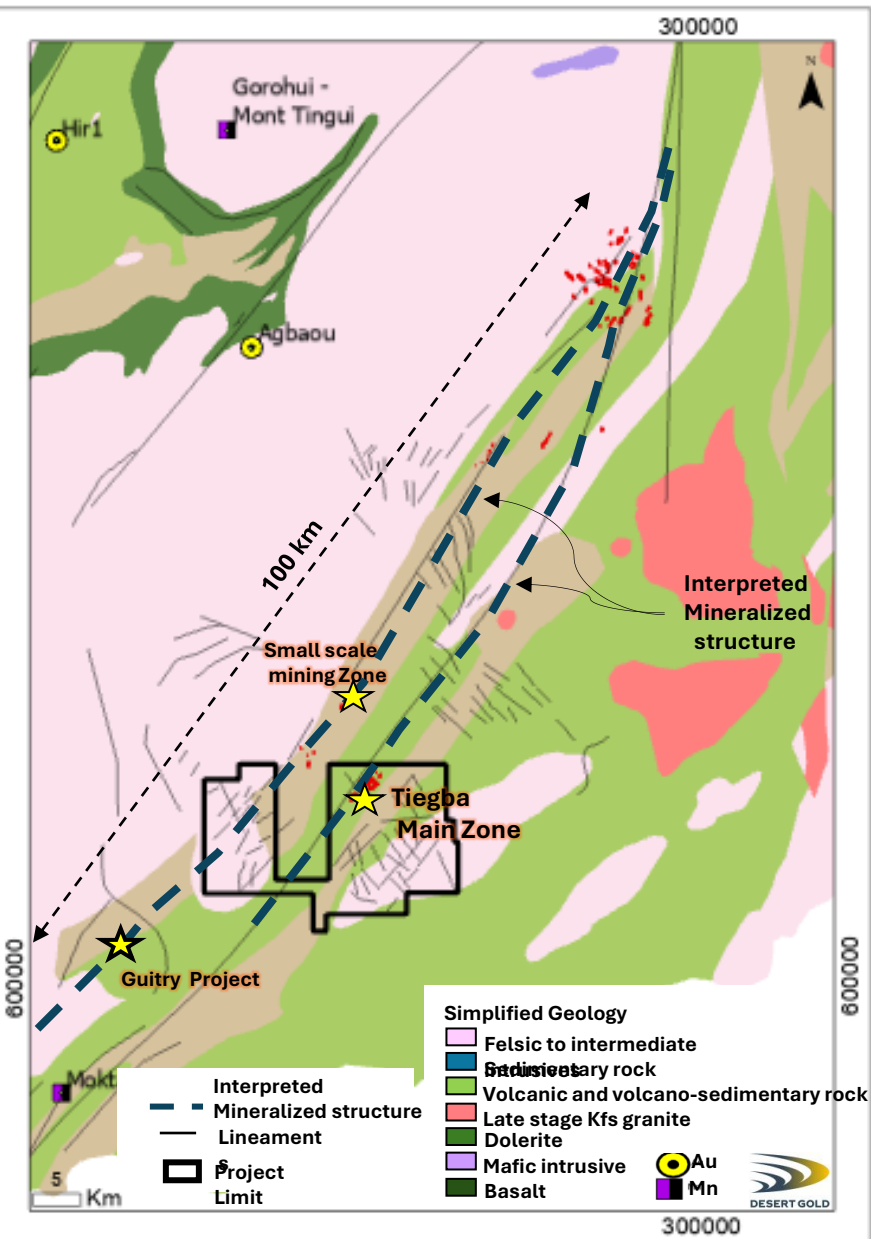
Major Strengths: Cluster of km soil anomalies (peak gold values > 900 ppb Au) along NE regional trends sub parallel to Tehini SZ. Located near multi-million-ounce deposits including: Agbaou 1.24MoZ, Bonikro/Hire 2.60MoZ and Yaouré 4,44MoZ; South strike extension proven prospectivity on Thor's Guitry advanced project

Challenges: Limited historical data with only soil geochemistry data, originally collected by Newcrest . Close proximity with local villages.

Confidence to move up the pipeline: High.

Under explored; project never drill tested despite prospective surface results; in situ gold in soil anomalies, near region scale structure with belt gold endowment >07MoZ.





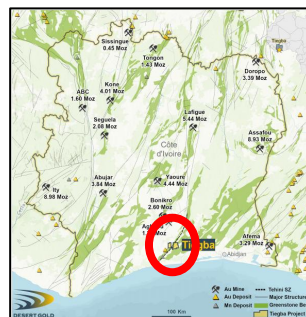
Highlights — Tiegba (Côte d'Ivoire)

District-scale architecture: Two sub-parallel, NE-trending mineralized corridors interpreted over >100 km along the Tehini SZ with bends and jogs.

Tier-1 neighbourhood: Close to the Bonikro–Agbaou mine complex, confirming regional fertility and providing direct analogues for deposit style, geometry and scale.

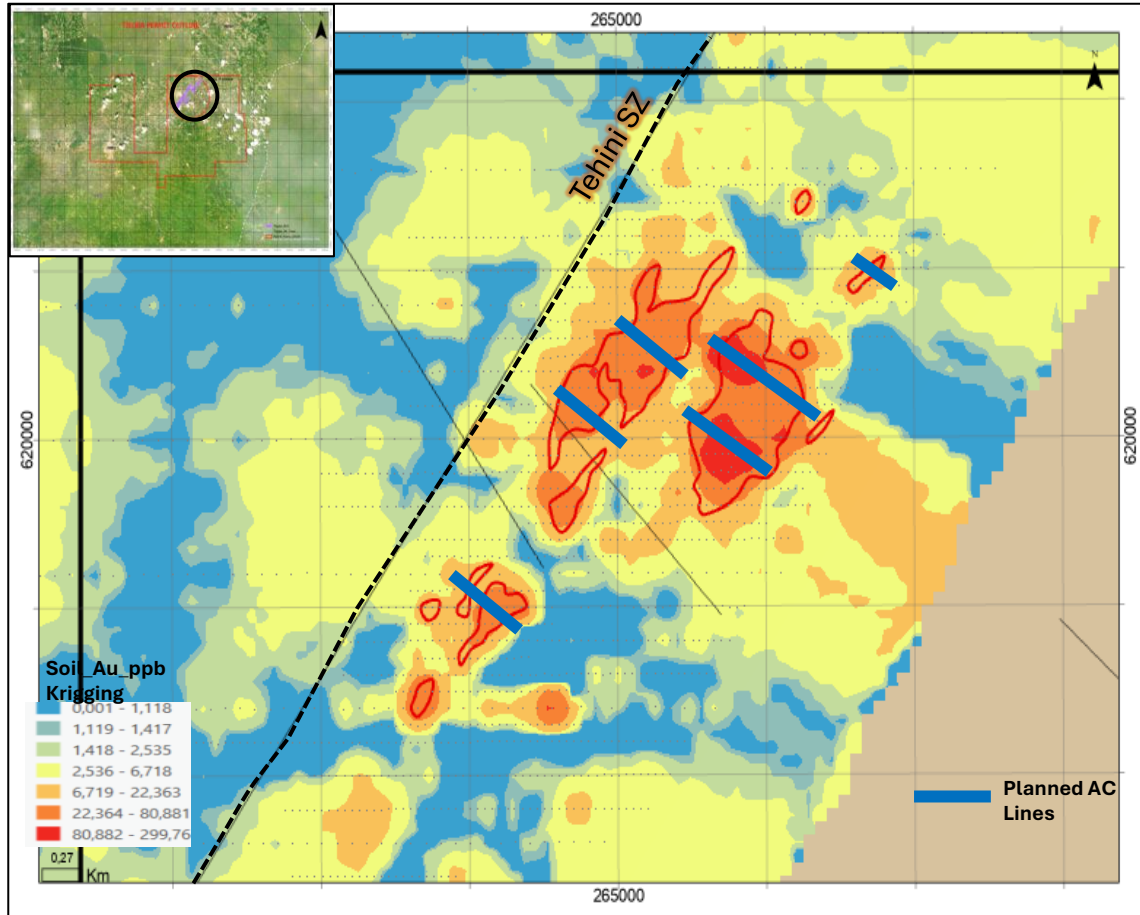
Multi-dataset convergence: coherent soil anomalies, and magnetic lineaments stack up along the corridors.

Scale & optionality: ~297 km² spanning volcano-sedimentary sequences and intrusions; strong competency contrasts and multiple trap types (shear-hosted lodes, jog-related dilation, and lithological contacts)



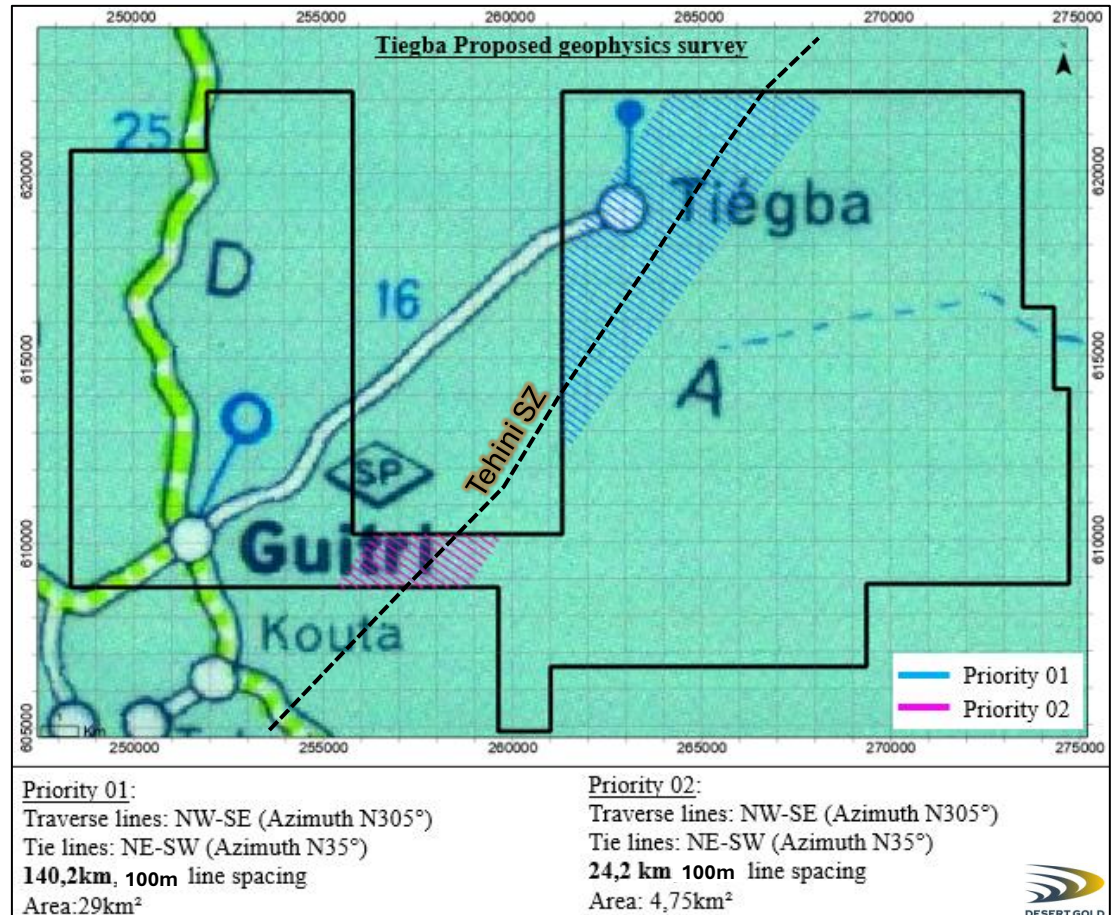


- **Soil geochemistry** — ~3,500 samples: infill + step-outs to expand grids across priority blocks; outputs: refined anomaly maps and ranked targets.
- **Integrated geology & regolith mapping** — 297 km² (permit-wide), phased by high-priority zones; deliverables: structural framework, regolith transport pathways, and access mapping.
- **Selective rock sampling** — up to 500 grabs tied to mapping program to validate anomalies and vector mineralization.
- **Grooving** — ~500 m across soil highs to expose near-surface structures; continuous channel sampling to confirm grade continuity and position drill collars.
- **Program outcomes (Q1-2026)**: drill-ready targets; collar locations & access routes defined; de-risked initial RC/DD program. Fast-Track to Drill-Ready Targets



2026 Proposed Drilling program

- **Aircore (~3,500 m)** — follow up prospective soil/auger highs along the Tehini structural corridor; rapid oxide-profile screening with 400 m fence spacing
- **Reverse Circulation (~2,500 m)** — step-outs & down-dip on positive AC results to define grade continuity and geometry; 60–120 m holes oriented to structures. Execution : collars refined in-field from AC + structural mapping.
- **Outcomes (Q1-2026)** — validated targets, sections & collar plan enabling target definition drilling next phase.

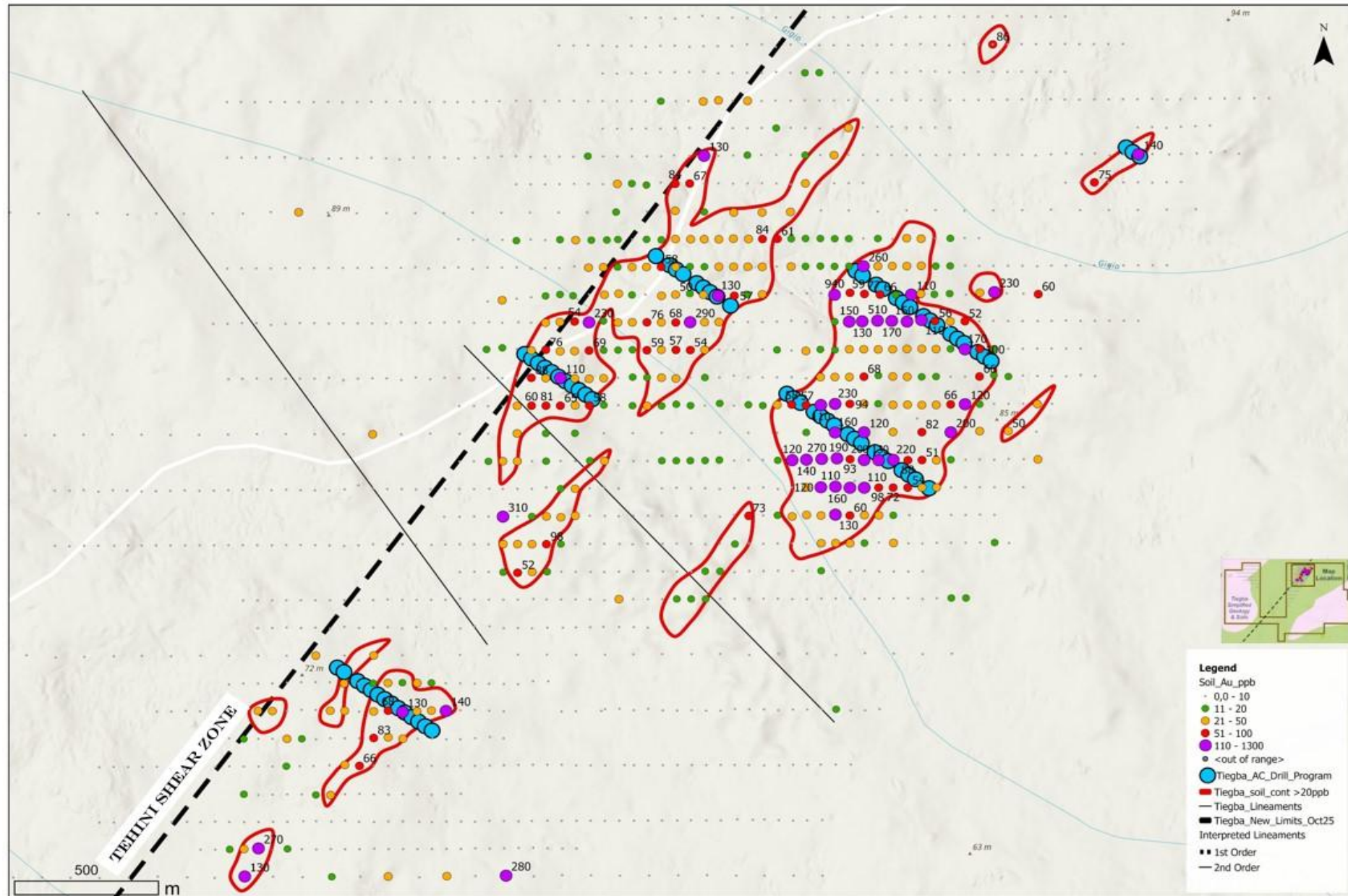


2026 Proposed Drone geophysics program

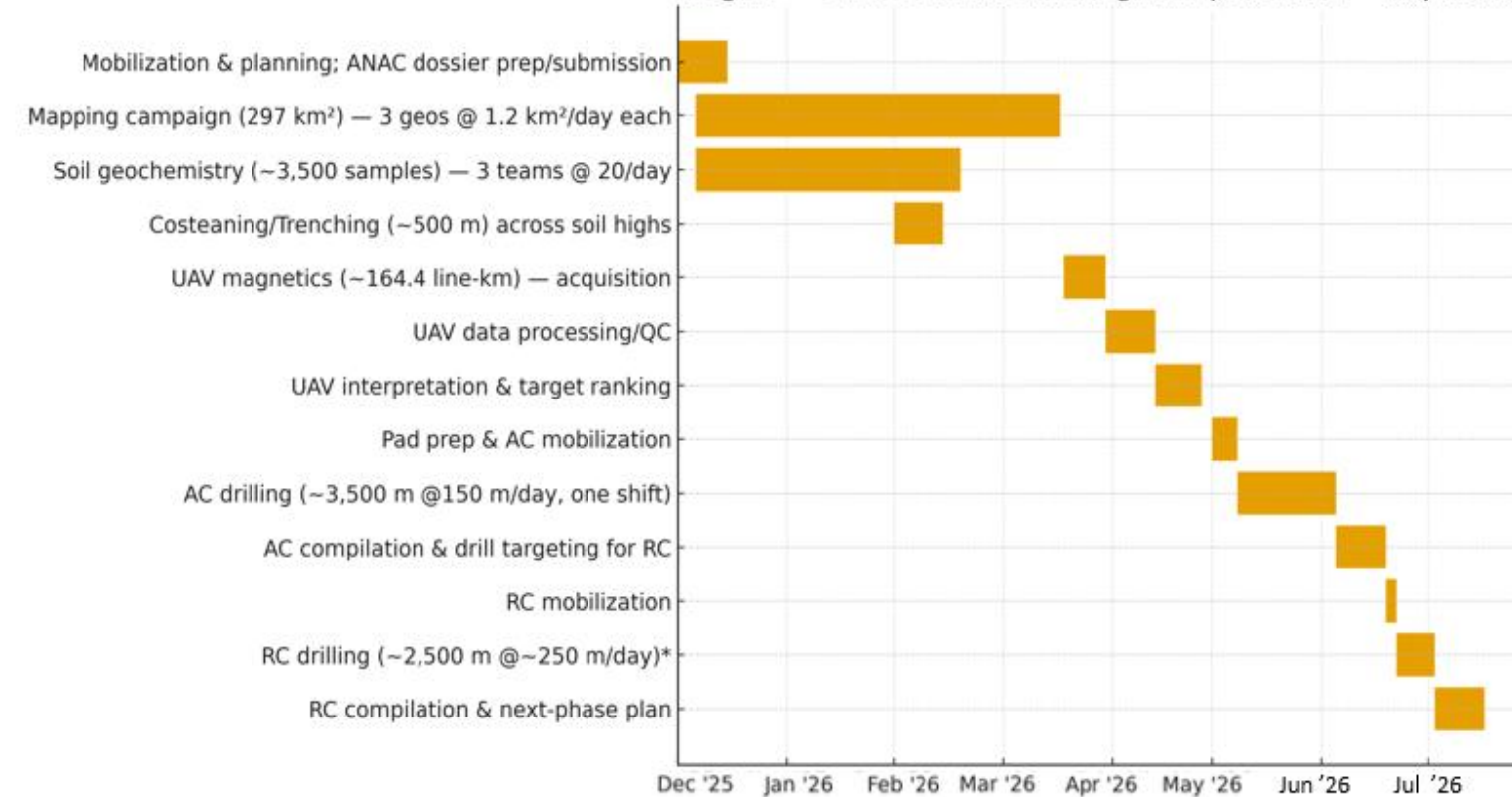
- **Scope:** ~164.4 line-km of UAV magnetics over the main NE mineralized corridor (Tiegba).
- **Objectives:** Map shears/lineaments and magnetic lithologies; refine targets along the Tehini Shear Zone corridor, ranked target list integrated with soils and drilling
- **Outcome (Q1-2026):** Higher-confidence drill-collar planning and enhanced structural model to accelerate discovery.

2026 First Pass Drill Program Details

- 70 air core holes planned for ~3,500 metres
- Results based follow program with RC drilling for depth extension testing and AC step out drilling for strike extension



Tiegba — Phased Work Chronogram (Dec 2025 – July 2026)



2025 Proposed Budget:

Program direct cost	\$	661,700
---------------------	----	---------

- ANAC drone survey authorization: submitted mid-Oct 2025; flights scheduled mid-Jan 2026.
- Weekly shipments to lab (soils/AC/RC); ~2-week turnaround (rolling results).
- Election risk window mid-Nov 2025: built-in pause in field ops.
- Grooving timed after first soil results to expose structures and place drill collars.
- AC → RC gating: compile AC + sections before RC collaring (April 2026).

Footnotes & Sources¹

- Sadiola/Yatela mine contains Indicated mineral resources of 113,725 tonnes grading 1.9 g/t Au for 6.79 million ounces at Sadiola. Historic production source: company annual reports and corporate filings. www.iamgold.com July 27, 2020. Past production at Sadiola – Anglo Gold and Iamgold corporate filings of 4.7 Moz. Past production at Yatela from AngloGold Ashanti Corporate filings – 2.2 Moz.
- Barrick's Loulo-Gounkoto mine complex with past production of 6.9 million ounces and Measured res of 24 Mt @ 4.09 g/t for 3.2 Moz Au of Au and Ind res of 36 Mt @ 4.69 g/t for 5.4 Moz Au. Barrick website – <https://barrick.q4cdn.com/788666289/files/quarterly-report/2018/Randgold-2018-Reserves-Resources.pdf>
- Estimated Indicated mineral resources of 19.9Mt @ 3.01 g/t Au totalling 1.9 million ounces of gold and estimated inferred mineral resources of 7.4 Mt @ 3.4 g/t Au totalling 0.8 Moz – sold to Algom Resources, a subsidiary of BCM, by Endeavour Mining in late 2018. <https://miningdataonline.com/property/182/Tabakoto-Mine.aspx#Production>. Historic gold production of 0.96 Moz to eoy 2018 – Endeavour and Avion Corporate filings on SEDAR.
- B2Gold Fekola mine: <https://www.b2gold.com/projects/reserves-resources> – Aug 8, 2022.
- Hummingbird Komana gold resource; 7.04 Mt @ 3.14 g/t Au totaling 676,000 oz probable reserve (2015) <https://hummingbirdresources.co.uk/operations-projects/mali/>
- Endeavour Kalana gold resource; Measured res of 9.5 Mt @ 4.19 g/t Au for 1.28 Moz, Ind res of 16.3 Mt @ 3.74 g/t Au for 1.96 Moz (2020) <https://www.endeavourmining.com/our-portfolio/Kalana-Project/default.aspx>
- Mineralization hosted on adjacent and/or nearby properties is not necessarily representative of mineralization hosted on the Company's SMSZ Property
- Mali gold production 2019 of 71.1 tonnes – <https://www.gold.co.uk/gold-news/2020/july/06/gold-production-mali-expected-plunge/#:~:text=Mali%20is%20Africa%E2%80%99s%20third-largest%20gold%20producer%2C%20after%20South,2018%20its%20industrial%20gold%20production%20rose%20by%2023%25.>
- Mali gold reserves are 822 tonnes in 2017- <https://www.reuters.com/article/mali-gold-idUSL5N1FV3FA>

